

## Product datasheet for **TA385481S**

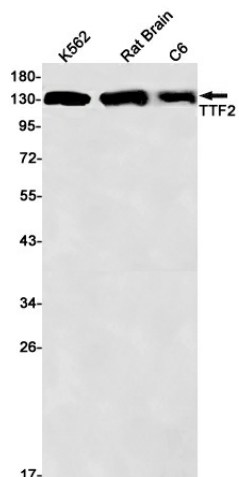
### TTF2 Rabbit Monoclonal Antibody [Clone ID: R04-3F1]

#### Product data:

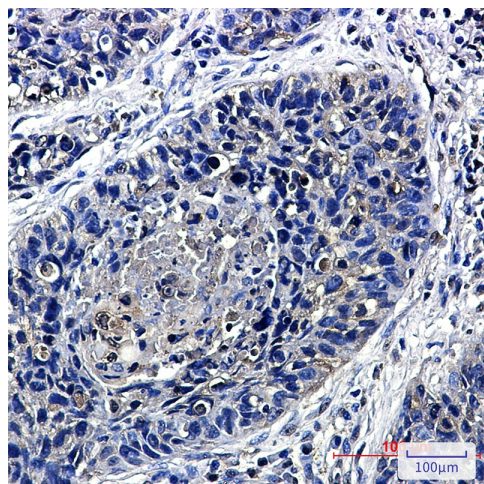
Product Type:	Primary Antibodies
Clone Name:	R04-3F1
Applications:	IF, IHC, WB
Recommended Dilution:	WB: 1/1000 IHC: 1/50 ICC/IF: 1/20
Reactivity:	Human, Rat
Host:	Rabbit
Isotype:	IgG
Clonality:	Monoclonal
Immunogen:	A synthetic peptide of human TTF2
Formulation:	50mM Tris-Glycine(pH 7.4), 0.15M NaCl, 40% Glycerol, 0.01% Sodium azide and 0.05% BSA
Concentration:	lot specific
Purification:	Affinity Purified
Conjugation:	Unconjugated
Storage:	Store at 4°C short term. Aliquot and store at -20°C long term. Avoid freeze/thaw cycles.
Stability:	1 year
Predicted Protein Size:	Calculated MW: 130 kDa; Observed MW: 130 kDa
Gene Name:	transcription termination factor 2
Database Link:	<a href="#">Entrez Gene 8458 Human Q9UNY4</a>
Background:	Swiss-Prot Acc.Q9UNY4.DsDNA-dependent ATPase which acts as a transcription termination factor by coupling ATP hydrolysis with removal of RNA polymerase II from the DNA template. May contribute to mitotic transcription repression. May also be involved in pre-mRNA splicing.
Synonyms:	F2; FKHL15; FOXE1; HuF2; TITF2

[View online »](#)

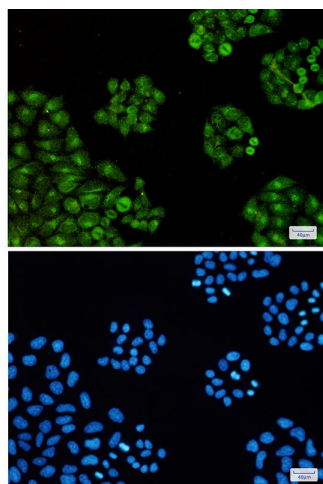
## Product images:



Western blot analysis of TTF2 in K562, rat Brain, C6 lysates using Transcription Termination Factor 2 antibody.



Immunohistochemistry analysis of paraffin-embedded Human lung cancer using TTF2 antibody. High-pressure and temperature Sodium Citrate pH 6.0 was used for antigen retrieval.



Immunocytochemistry analysis of TTF2 (green) in HeLa using TTF2 antibody, and DAPI (blue)

