

Product datasheet for **TA385478**

TSH beta (TSHB) Rabbit Polyclonal Antibody

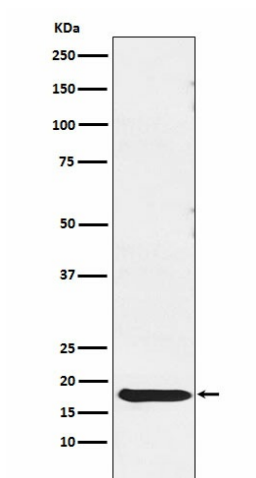
Product data:

Product Type:	Primary Antibodies
Applications:	IHC, WB
Recommended Dilution:	WB: 1/500-1/2000 IHC: 1/50-1/200
Reactivity:	Human
Host:	Rabbit
Isotype:	IgG
Clonality:	Polyclonal
Immunogen:	A synthesized peptide derived from human TSH beta
Formulation:	Rabbit IgG in phosphate buffered saline , pH 7.4, 150mM NaCl, 0.02% sodium azide and 50% glycerol.
Concentration:	lot specific
Purification:	Affinity Chromatography
Conjugation:	Unconjugated
Storage:	Store at 4°C short term. Aliquot and store at -20°C long term. Avoid freeze/thaw cycles.
Stability:	1 year
Predicted Protein Size:	16kDa
Gene Name:	thyroid stimulating hormone beta
Database Link:	Entrez Gene 7252 Human P01222
Background:	Swiss-Prot Acc.P01222.Various hormones are secreted from the anterior pituitary during development and growth. Thyroid Stimulating Hormone (TSH) is secreted from the anterior pituitary and controls thyroid structure and metabolism
Synonyms:	CHNG4; OTTHUMP00000013654; TSH-B; TSH-BETA



[View online »](#)

Product images:



Western blot analysis of TSH beta in Human pituitary lysates using Thyrotropin Subunit beta antibody.