

Product datasheet for **TA385477**

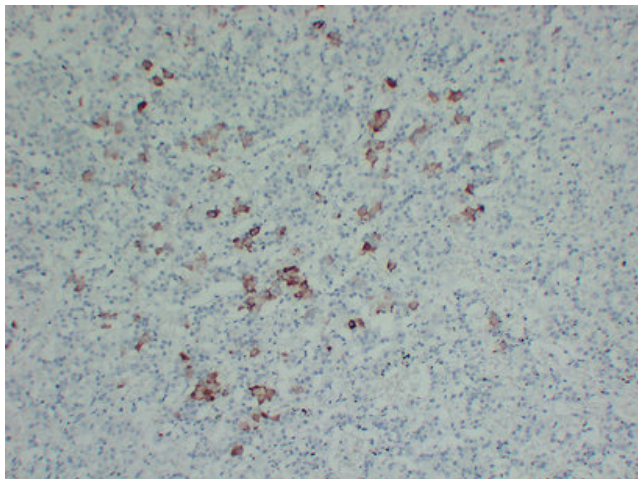
TSH beta (TSHB) Mouse Monoclonal Antibody [Clone ID: 1A1-6D9-4A7]

Product data:

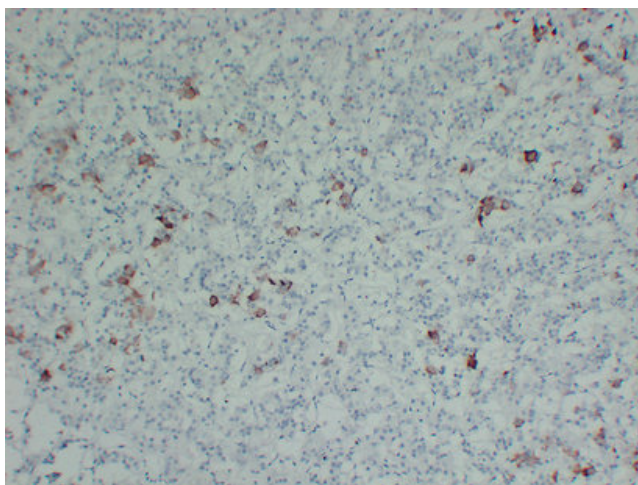
Product Type:	Primary Antibodies
Clone Name:	1A1-6D9-4A7
Applications:	IHC
Recommended Dilution:	IHC-p: 1/100-1/500
Reactivity:	Human
Host:	Mouse
Isotype:	IgG1, lambda
Clonality:	Monoclonal
Immunogen:	Synthesized peptide derived from human Thyroid-Stimulating Hormone(TSH)
Formulation:	Liquid in PBS containing 50% glycerol, 0.5% BSA and 0.02% sodium azide, pH 7.3.
Concentration:	lot specific
Purification:	Affinity Chromatography
Conjugation:	Unconjugated
Storage:	Store at 4°C short term. Aliquot and store at -20°C long term. Avoid freeze/thaw cycles.
Stability:	1 year
Gene Name:	thyroid stimulating hormone beta
Database Link:	Entrez Gene 7252 Human P01222
Background:	Swiss-Prot Acc.P01222.
Synonyms:	CHNG4; OTTHUMP00000013654; TSH-B; TSH-BETA



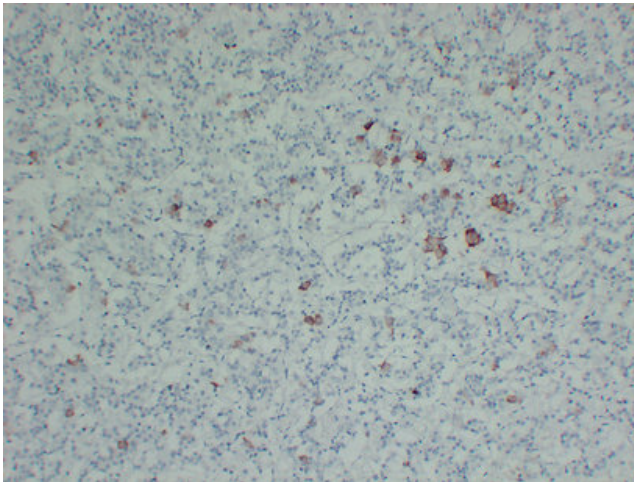
[View online »](#)

Product images:

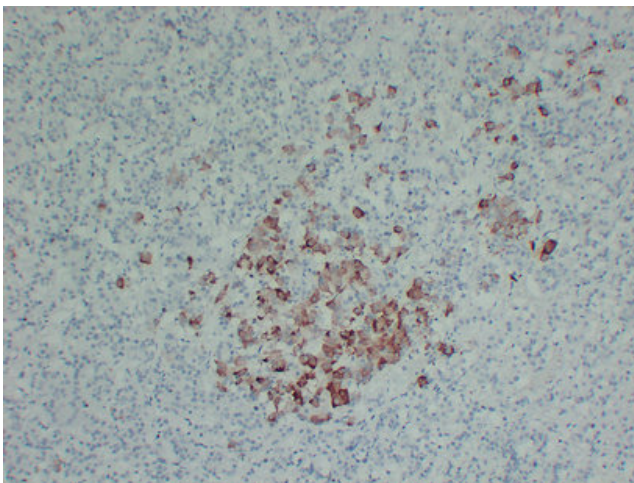
Immunohistochemical analysis of paraffin-embedded Pituitary adenocarcinoma. 1, Antibody was diluted at 1:200(4°,overnight). 2, Citric acid ,pH6.0 was used for antigen retrieval. 3,Secondary antibody was diluted at 1:200(room temperature, 30min).



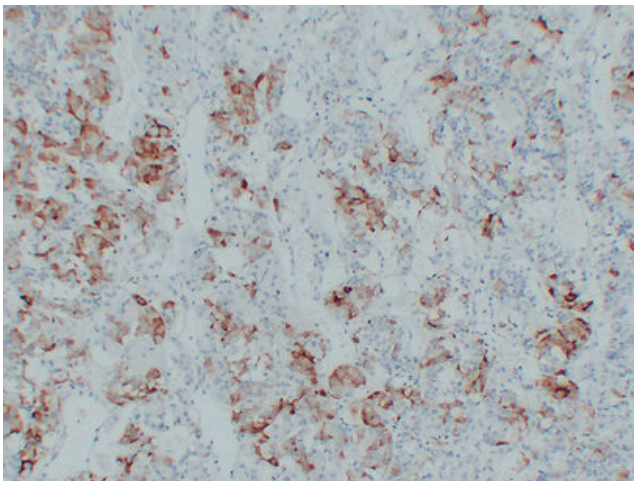
Immunohistochemical analysis of paraffin-embedded Pituitary adenocarcinoma. 1, Antibody was diluted at 1:200(4°,overnight). 2, Citric acid ,pH6.0 was used for antigen retrieval. 3,Secondary antibody was diluted at 1:200(room temperature, 30min).



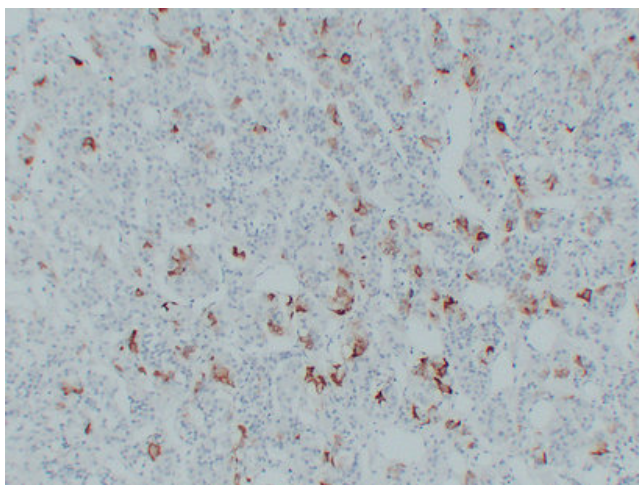
Immunohistochemical analysis of paraffin-embedded Pituitary adenocarcinoma. 1, Antibody was diluted at 1:200(4°,overnight). 2, Citric acid ,pH6. was used for antigen retrieval. 3,Secondary antibody was diluted at 1:200(room temperature, 30min).



Immunohistochemical analysis of paraffin-embedded Pituitary adenocarcinoma. 1, Antibody was diluted at 1:200(4°,overnight). 2, Citric acid ,pH6.0 was used for antigen retrieval. 3,Secondary antibody was diluted at 1:200(room temperature, 30min).



Immunohistochemical analysis of paraffin-embedded Pituitary adenocarcinoma. 1, Antibody was diluted at 1:200(4°,overnight). 2, Citric acid ,pH6.0 was used for antigen retrieval. 3,Secondary antibody was diluted at 1:200(room temperature, 30min).



Immunohistochemical analysis of paraffin-embedded Pituitary adenocarcinoma. 1, Antibody was diluted at 1:200(4°, overnight). 2, Citric acid ,pH6.0 was used for antigen retrieval. 3, Secondary antibody was diluted at 1:200(room temperature, 30min).