

Product datasheet for **TA385473**

TSG101 Rabbit Polyclonal Antibody

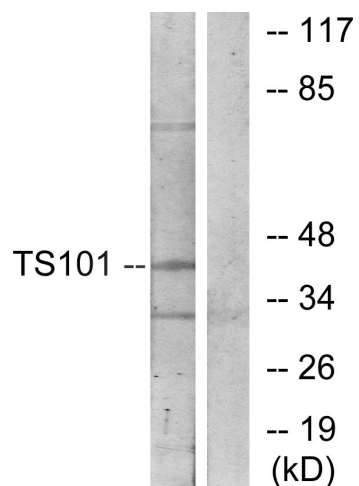
Product data:

Product Type:	Primary Antibodies
Applications:	ELISA, IF, IHC, WB
Recommended Dilution:	WB: 1/500-1/2000 IHC: 1/100-1/300 IF: 1/200-1/1000 ELISA: 1/5000
Reactivity:	Human, Mouse, Rat, Monkey
Host:	Rabbit
Isotype:	IgG
Clonality:	Polyclonal
Immunogen:	The antiserum was produced against synthesized peptide derived from human TSG101. AA range:281-330
Formulation:	Liquid in PBS containing 50% glycerol, 0.5% BSA and 0.02% sodium azide, pH 7.3.
Concentration:	lot specific
Purification:	Affinity Purified
Conjugation:	Unconjugated
Storage:	Store at 4°C short term. Aliquot and store at -20°C long term. Avoid freeze/thaw cycles.
Stability:	1 year
Predicted Protein Size:	Observed MW (kDa):44
Gene Name:	tumor susceptibility 101
Database Link:	Entrez Gene 7251 Human Q99816
Background:	Swiss-Prot Acc.Q99816.
Synonyms:	TSG10; VPS23

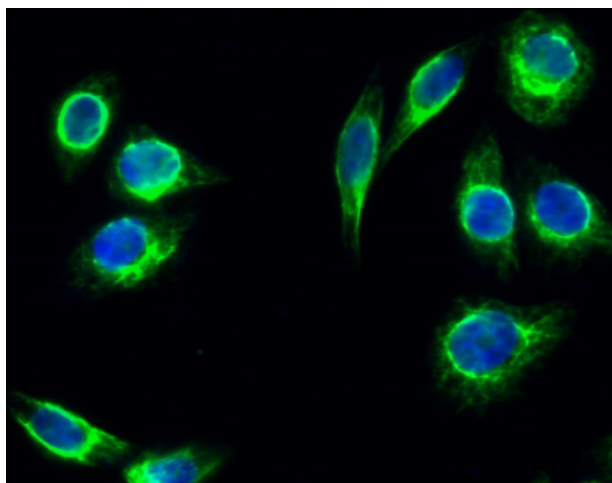


[View online »](#)

Product images:



Western blot analysis of TSG101 in COS7 lysates using TS101 antibody. The lane on the right is blocked with the synthesized peptide.



Immunofluorescence analysis of TSG101 in HeLa using TGS101 antibody (green)