

Product datasheet for **TA385472**

Tuberin (TSC2) Rabbit Polyclonal Antibody

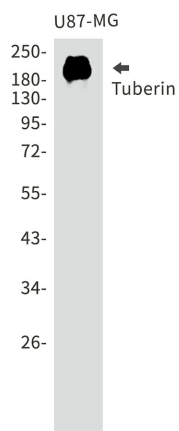
Product data:

| | |
|-------------------------|--|
| Product Type: | Primary Antibodies |
| Applications: | FC, IHC, WB |
| Recommended Dilution: | WB: 1/2000 IHC: 1/20 FC: 1/20 |
| Reactivity: | Human, Mouse, Rat |
| Host: | Rabbit |
| Isotype: | IgG |
| Clonality: | Polyclonal |
| Immunogen: | A synthetic peptide of human Tuberin |
| Formulation: | 50mM Tris-Glycine(pH 7.4), 0.15M NaCl, 40% Glycerol, 0.01% Sodium azide and 0.05% BSA |
| Concentration: | lot specific |
| Purification: | Affinity Purified |
| Conjugation: | Unconjugated |
| Storage: | Store at 4°C short term. Aliquot and store at -20°C long term. Avoid freeze/thaw cycles. |
| Stability: | 1 year |
| Predicted Protein Size: | Calculated MW: 201 kDa; Observed MW: 201 kDa |
| Gene Name: | tuberous sclerosis 2 |
| Database Link: | Entrez Gene 7249 Human P49815 |
| Background: | Swiss-Prot Acc.P49815. |
| Synonyms: | FLJ43106; LAM; TSC4; tuberin |



[View online »](#)

Product images:



Western blot analysis of Tuberin in U87-MG lysates using Tuberin antibody.