

Product datasheet for **TA385471M**

TRUB2 Rabbit Monoclonal Antibody [Clone ID: R08-5D1]

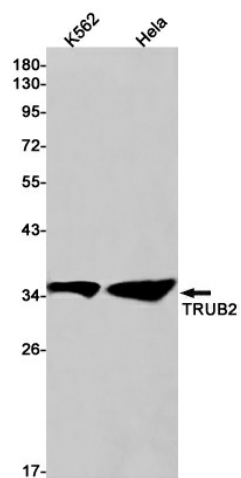
Product data:

Product Type:	Primary Antibodies
Clone Name:	R08-5D1
Applications:	WB
Recommended Dilution:	WB: 1/1000
Reactivity:	Human
Host:	Rabbit
Isotype:	IgG
Clonality:	Monoclonal
Immunogen:	Recombinant protein of human TRUB2
Formulation:	50mM Tris-Glycine(pH 7.4), 0.15M NaCl, 40% Glycerol, 0.01% Sodium azide and 0.05% BSA
Concentration:	lot specific
Purification:	Affinity Purified
Conjugation:	Unconjugated
Storage:	Store at 4°C short term. Aliquot and store at -20°C long term. Avoid freeze/thaw cycles.
Stability:	1 year
Predicted Protein Size:	Calculated MW: 37 kDa; Observed MW: 37 kDa
Gene Name:	TruB pseudouridine synthase family member 2
Database Link:	Entrez Gene 26995 Human O95900
Background:	Swiss-Prot Acc.O95900.Minor enzyme contributing to the isomerization of uridine to pseudouridine (pseudouridylation) of specific mitochondrial mRNAs (mt-mRNAs) such as COXI and COXIII mt-mRNAs (PubMed:27974379). As a component of a functional protein-RNA module, consisting of RCC1L, NGRN, RPU3D3, RPU3D4, TRUB2, FASTKD2 and 16S mitochondrial ribosomal RNA (16S mt-rRNA), controls 16S mt-rRNA abundance and is required for intra-mitochondrial translation (PubMed:27667664).
Synonyms:	CLONE24922; RP11-339B21.1



[View online »](#)

Product images:



Western blot analysis of TRUB2 in K562, HeLa lysates using TRUB2 antibody.