

## Product datasheet for **TA385467**

### TRIM68 Rabbit Polyclonal Antibody

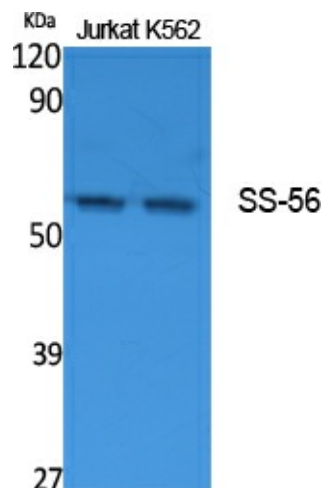
#### Product data:

Product Type:	Primary Antibodies
Applications:	ELISA, IHC, WB
Recommended Dilution:	WB: 1/500-1/2000 IHC-p: 1/100-300 ELISA: 1/40000
Reactivity:	Human
Host:	Rabbit
Isotype:	IgG
Clonality:	Polyclonal
Immunogen:	Synthesized peptide derived from the Internal region of human SS-56.
Formulation:	Liquid in PBS containing 50% glycerol, 0.5% BSA and 0.02% sodium azide, pH 7.3.
Concentration:	lot specific
Purification:	Affinity Purified
Conjugation:	Unconjugated
Storage:	Store at 4°C short term. Aliquot and store at -20°C long term. Avoid freeze/thaw cycles.
Stability:	1 year
Predicted Protein Size:	Observed MW (kDa):56
Database Link:	<a href="#">Q6AZZ1</a>
Background:	Swiss-Prot Acc.Q6AZZ1.

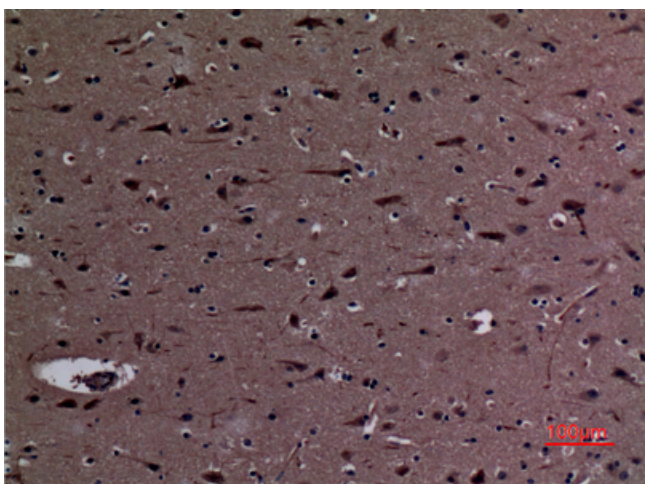


[View online »](#)

## Product images:



Western blot analysis of TRIM68 in Jurkat, K562 lysates using SS56 antibody.



Immunohistochemistry analysis of paraffin-embedded Human brain using TRIM68 antibody. High-pressure and temperature Sodium Citrate pH 6.0 was used for antigen retrieval.