

Product datasheet for **TA385464S**

TRIM25 Rabbit Monoclonal Antibody [Clone ID: R06-1H2]

Product data:

Product Type:	Primary Antibodies
Clone Name:	R06-1H2
Applications:	IF, IP, WB
Recommended Dilution:	WB: 1/1000-1/5000 ICC/IF: 1/50-1/200 IP: 1/20
Reactivity:	Human, Rat
Host:	Rabbit
Isotype:	IgG
Clonality:	Monoclonal
Immunogen:	A synthetic peptide of human TRIM25
Formulation:	50mM Tris-Glycine(pH 7.4), 0.15M NaCl, 40% Glycerol, 0.01% Sodium azide and 0.05% BSA
Concentration:	lot specific
Purification:	Affinity Purified
Conjugation:	Unconjugated
Storage:	Store at 4°C short term. Aliquot and store at -20°C long term. Avoid freeze/thaw cycles.
Stability:	1 year
Predicted Protein Size:	Calculated MW: 71 kDa; Observed MW: 71 kDa
Gene Name:	tripartite motif containing 25
Database Link:	Entrez Gene 7706 Human Q14258



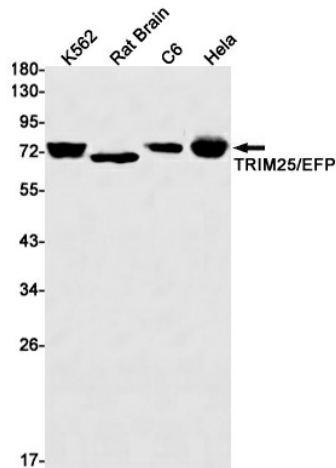
[View online »](#)

Background:

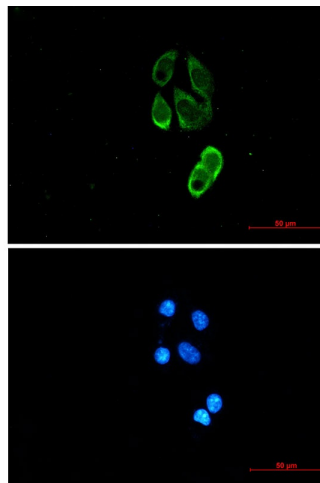
Swiss-Prot Acc.Q14258.Functions as a ubiquitin E3 ligase and as an ISG15 E3 ligase. Involved in innate immune defense against viruses by mediating ubiquitination of DDX58. Mediates 'Lys-63'-linked polyubiquitination of the DDX58 N-terminal CARD-like region which is crucial for triggering the cytosolic signal transduction that leads to the production of interferons in response to viral infection. Promotes ISGylation of 14-3-3 sigma (SFN), an adapter protein implicated in the regulation of a large spectrum signaling pathway. Mediates estrogen action in various target organs. Mediates the ubiquitination and subsequent proteasomal degradation of ZFHX3 (PubMed:22452784).

Synonyms:

EFP; RNF147; Z147; ZNF147

Product images:


Western blot analysis of TRIM25/EFP in K562, rat Brain, C6, HeLa lysates using TRIM25 antibody.



Immunocytochemistry analysis of TRIM25/EFP (green) in MCF-7 using TRIM25/EFP antibody, and DAPI(blue)