

Product datasheet for **TA385459**

TRIB3 Rabbit Polyclonal Antibody

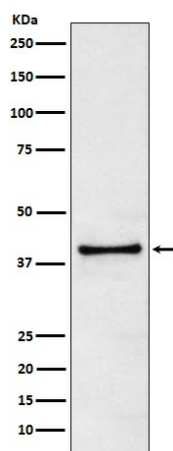
Product data:

| | |
|-------------------------|---|
| Product Type: | Primary Antibodies |
| Applications: | IP, WB |
| Recommended Dilution: | WB: 1/1000-1/5000 IP: 1/20 |
| Reactivity: | Human |
| Host: | Rabbit |
| Isotype: | IgG |
| Clonality: | Polyclonal |
| Immunogen: | A synthesized peptide derived from human TRIB3 |
| Formulation: | Rabbit IgG in phosphate buffered saline , pH 7.4, 150mM NaCl, 0.02% sodium azide and 50% glycerol. |
| Concentration: | lot specific |
| Purification: | Affinity Chromatography |
| Conjugation: | Unconjugated |
| Storage: | Store at 4°C short term. Aliquot and store at -20°C long term. Avoid freeze/thaw cycles. |
| Stability: | 1 year |
| Predicted Protein Size: | 40kDa |
| Gene Name: | tribbles pseudokinase 3 |
| Database Link: | Entrez Gene 57761 Human Q96RU7 |
| Background: | Swiss-Prot Acc.Q96RU7.Disrupts insulin signaling by binding directly to Akt kinases and blocking their activation. May bind directly to and mask the 'Thr-308' phosphorylation site in AKT1. Binds to ATF4 and inhibits its transcriptional activation activity. Interacts with the NF-kappa-B transactivator p65 RELA and inhibits its phosphorylation and thus its transcriptional activation activity. |
| Synonyms: | C20orf97; dj1103G7.3; NIPK; SINK; SKIP3; TRB-3; TRB3 |



[View online »](#)

Product images:



Western blot analysis of TRIB3 in 293T lysates using TRIB3 antibody.