

Product datasheet for **TA385458M**

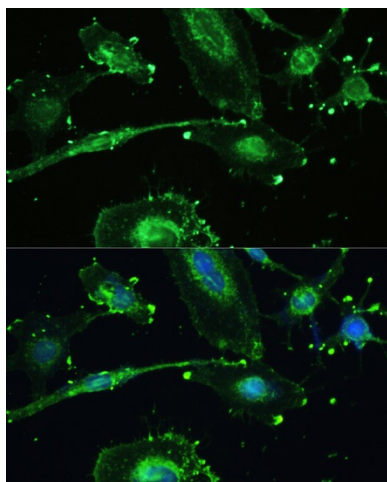
TREM2 Rabbit Polyclonal Antibody

Product data:

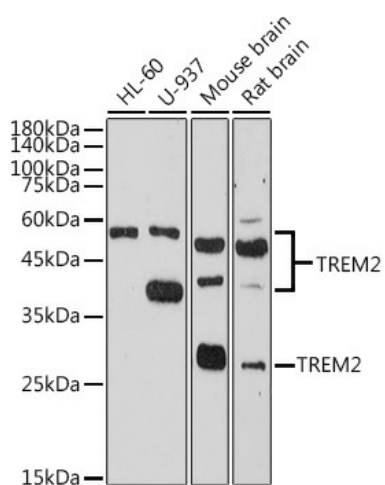
Product Type:	Primary Antibodies
Applications:	IF, IHC, WB
Recommended Dilution:	WB: 1/500-1/1000 IHC: 1/50-1/100 IF: 1/50-1/200
Reactivity:	Human, Mouse, Rat
Host:	Rabbit
Isotype:	IgG
Clonality:	Polyclonal
Immunogen:	Recombinant fusion protein containing a sequence of human TREM2 (NP_061838.1).
Formulation:	Liquid in PBS containing 50% glycerol, 0.5% BSA and 0.02% sodium azide, pH 7.3.
Concentration:	lot specific
Purification:	Affinity Purified
Conjugation:	Unconjugated
Storage:	Store at 4°C short term. Aliquot and store at -20°C long term. Avoid freeze/thaw cycles.
Stability:	1 year
Predicted Protein Size:	Calculated MW:24kDa/25kDa;Observed MW:25kDa
Gene Name:	triggering receptor expressed on myeloid cells 2
Database Link:	Entrez Gene 54209 Human Q9NZC2
Background:	This gene encodes a membrane protein that forms a receptor signaling complex with the TYRO protein tyrosine kinase binding protein. The encoded protein functions in immune response and may be involved in chronic inflammation by triggering the production of constitutive inflammatory cytokines. Defects in this gene are a cause of polycystic lipomembranous osteodysplasia with sclerosing leukoencephalopathy (PLOSL). Alternative splicing results in multiple transcript variants encoding different isoforms.
Synonyms:	TREM-2; Trem2a; Trem2b; Trem2c


[View online »](#)

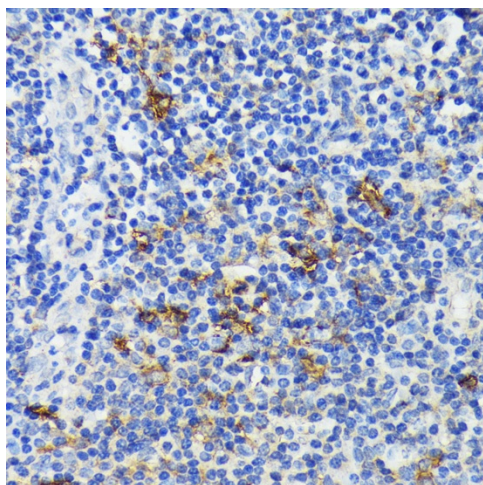
Product images:



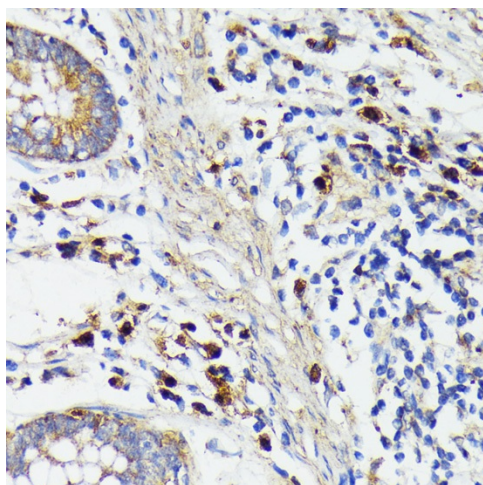
Immunofluorescence - TREM2 Polyclonal Antibody. Immunofluorescence analysis of U-251MG cells using TREM2 antibody at dilution of 1:100. Blue: DAPI for nuclear staining.



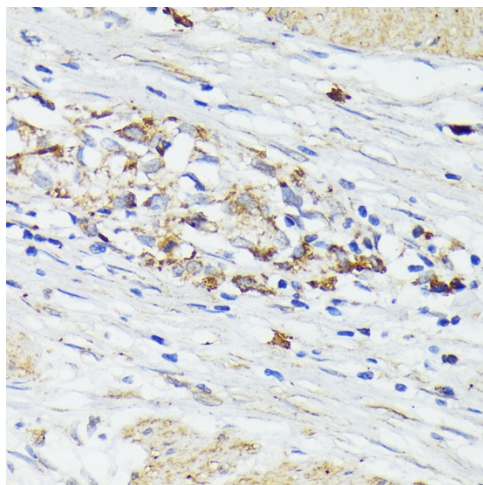
Western blot analysis of TREM2 in various cell lines lysates using TREM2 antibody.



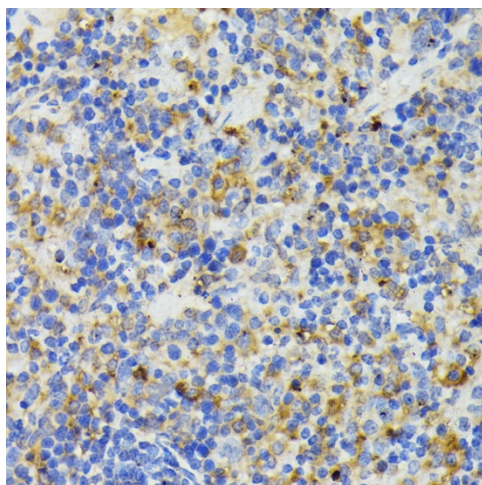
Immunohistochemistry - TREM2 Polyclonal Antibody. Immunohistochemistry of paraffin-embedded human tonsil using TREM2 antibody at dilution of 1:200 .



Immunohistochemistry - TREM2 Polyclonal Antibody. Immunohistochemistry of paraffin-embedded human colon carcinoma using TREM2 antibody at dilution of 1:2 .



Immunohistochemistry - TREM2 Polyclonal Antibody. Immunohistochemistry of paraffin-embedded human gastric cancer using TREM2 antibody at dilution of 1:200 .



Immunohistochemistry - TREM2 Polyclonal Antibody. Immunohistochemistry of paraffin-embedded mouse spleen using TREM2 antibody at dilution of 1:200 .