

## Product datasheet for **TA385458**

### TREM2 Rabbit Polyclonal Antibody

#### Product data:

**Product Type:** Primary Antibodies

**Applications:** IF, IHC, WB

**Recommended WB:** 1/500-1/1000

**Dilution:** IHC: 1/50-1/200

IF: 1/20-1/100

**Reactivity:** Human, Mouse, Rat

**Host:** Rabbit

**Isotype:** IgG

**Clonality:** Polyclonal

**Immunogen:** Recombinant fusion protein containing a sequence corresponding to amino acids 19-160 of human TREM2 (NP\_061838.1).HNTTVFQGVAGQSLQVSCPYSMKHWGRRKAWCRQLGEGKGPCQRVSTHNLWLLSFLRRWNGSTAITDDT

**Formulation:** Liquid in PBS containing 50% glycerol, 0.5% BSA and 0.02% sodium azide, pH 7.3.

**Concentration:** lot specific

**Purification:** Affinity Purified

**Conjugation:** Unconjugated

**Storage:** Store at 4°C short term. Aliquot and store at -20°C long term. Avoid freeze/thaw cycles.

**Stability:** 1 year

**Predicted Protein Size:** Calculated MW:24kDa/25kDa;Observed MW:25kDa

**Gene Name:** triggering receptor expressed on myeloid cells 2

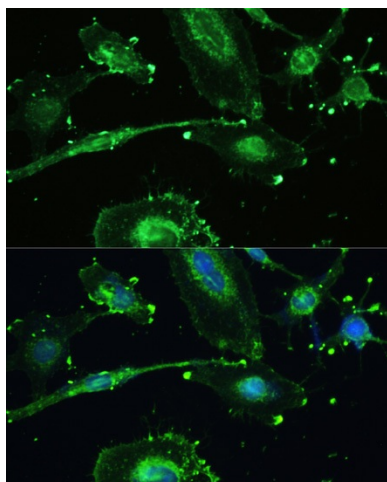
**Database Link:** [Entrez Gene 54209 Human Q9NZC2](#)

**Background:** Swiss-Prot Acc.Q9NZC2.This gene encodes a membrane protein that forms a receptor signaling complex with the response and may be involved in chronic inflammation by triggering the production of constitutive inflammatory sclerosing leukoencephalopathy (PLOSL). Alternative splicing results in multiple transcript variants encoding different

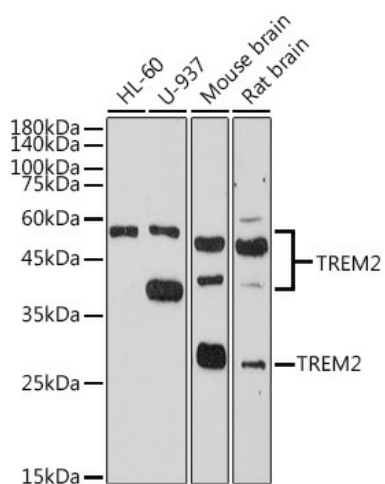
**Synonyms:** TREM-2; Trem2a; Trem2b; Trem2c



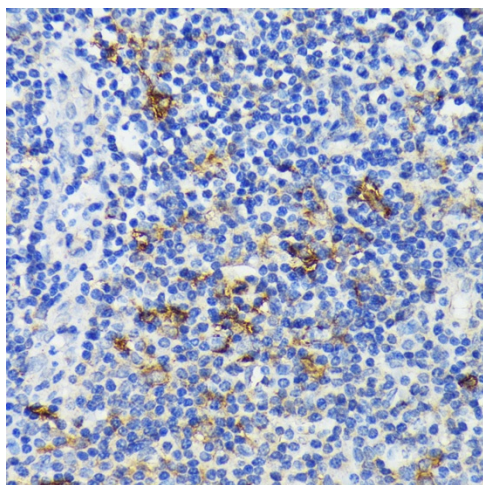
[View online »](#)

**Product images:**


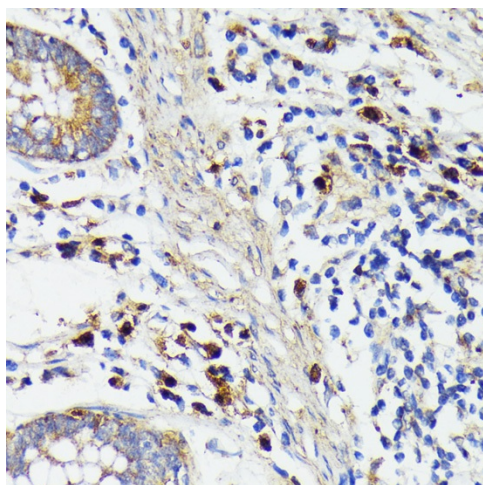
Immunofluorescence - TREM2 Polyclonal Antibody. Immunofluorescence analysis of U-251MG cells using TREM2 antibody at dilution of 1:100. Blue: DAPI for nuclear staining.



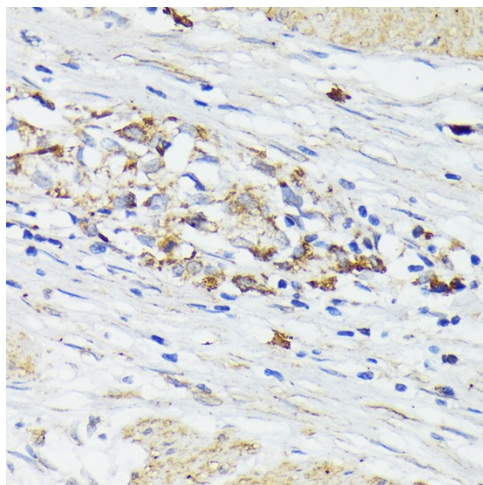
Western blot analysis of TREM2 in various cell lines lysates using TREM2 antibody.



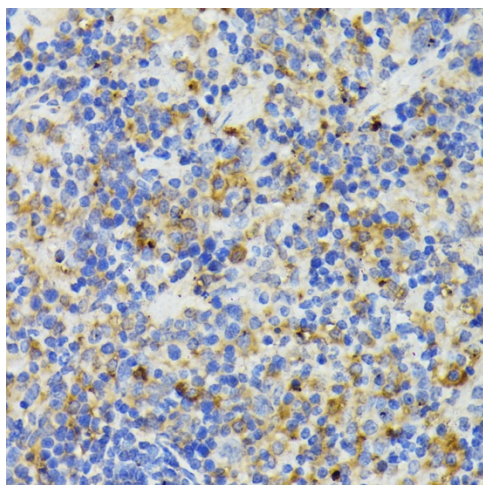
Immunohistochemistry - TREM2 Polyclonal Antibody. Immunohistochemistry of paraffin-embedded human tonsil using TREM2 antibody at dilution of 1:200 .



Immunohistochemistry - TREM2 Polyclonal Antibody. Immunohistochemistry of paraffin-embedded human colon carcinoma using TREM2 antibody at dilution of 1:2 .



Immunohistochemistry - TREM2 Polyclonal Antibody. Immunohistochemistry of paraffin-embedded human gastric cancer using TREM2 antibody at dilution of 1:200 .



Immunohistochemistry - TREM2 Polyclonal Antibody. Immunohistochemistry of paraffin-embedded mouse spleen using TREM2 antibody at dilution of 1:200 .