

## Product datasheet for **TA385451S**

### Tubulin Polymerization Promoting Protein (TPPP) Rabbit Monoclonal Antibody [Clone ID: R06-8I4]

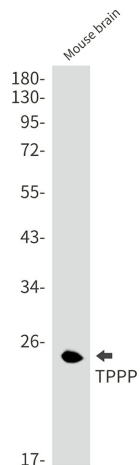
#### Product data:

Product Type:	Primary Antibodies
Clone Name:	R06-8I4
Applications:	IF, IHC, WB
Recommended Dilution:	WB: 1/2000 IHC: 1/20 ICC/IF: 1/20
Reactivity:	Human, Mouse, Rat
Host:	Rabbit
Isotype:	IgG
Clonality:	Monoclonal
Immunogen:	A synthetic peptide of human Tubulin Polymerization Promoting Protein
Formulation:	50mM Tris-Glycine(pH 7.4), 0.15M NaCl, 40% Glycerol, 0.01% Sodium azide and 0.05% BSA
Concentration:	lot specific
Purification:	Affinity Purified
Conjugation:	Unconjugated
Storage:	Store at 4°C short term. Aliquot and store at -20°C long term. Avoid freeze/thaw cycles.
Stability:	1 year
Predicted Protein Size:	Calculated MW: 24 kDa; Observed MW: 24 kDa
Gene Name:	tubulin polymerization promoting protein
Database Link:	<a href="#">Entrez Gene 11076 Human O94811</a>
Background:	Swiss-Prot Acc.O94811.May play a role in the polymerization of tubulin into microtubules, microtubule bundling and the stabilization of existing microtubules, thus maintaining the integrity of the microtubule network. May play a role in mitotic spindle assembly and nuclear envelope breakdown.
Synonyms:	p24; p25; p25-alpha; p25alpha; TPPP/p25; TPPP1

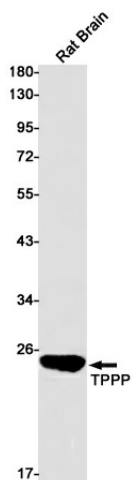


[View online »](#)

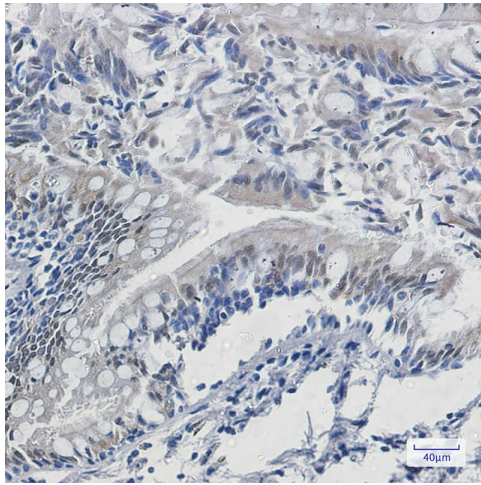
**Product images:**



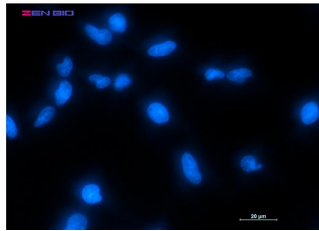
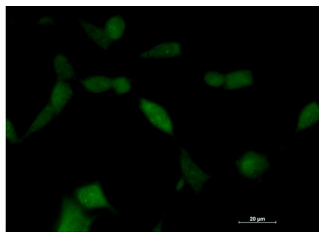
Western blot analysis of TPPP in mouse brain lysates using TPPP antibody.



Western blot analysis of TPPP in rat Brain lysates using TPPP antibody



Immunohistochemistry analysis of paraffin-embedded Human lung cancer using Tubulin Polymerization Promoting Protein antibody. High-pressure and temperature Sodium Citrate pH 6.0 was used for antigen retrieval.



Immunocytochemistry analysis of TPPP (green) in LNcap using TPPP antibody, and DAPI (blue).