

## Product datasheet for **TA385444**

### p53 (TP53) Rabbit Polyclonal Antibody

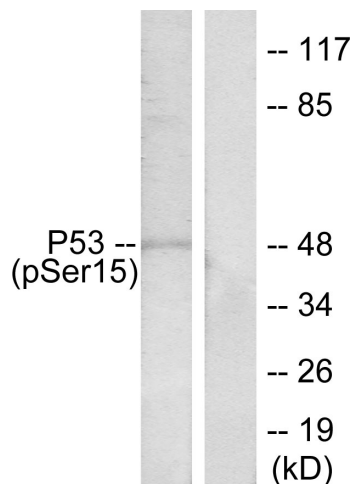
#### Product data:

Product Type:	Primary Antibodies
Applications:	ELISA, IF, IHC, IP, WB
Recommended Dilution:	WB: 1/500-1/2000 IHC: 1/100-1/300 Immunoprecipitation: 2-5 IF: 1/200-1/1000 ELISA: 1/10000
Reactivity:	Human, Rat
Host:	Rabbit
Isotype:	IgG
Clonality:	Polyclonal
Immunogen:	The antiserum was produced against synthesized peptide derived from human p53 around the phosphorylation site of Ser15. AA range:1-50 (Phosphorylated)
Formulation:	Liquid in PBS containing 50% glycerol, 0.5% BSA and 0.02% sodium azide, pH 7.3.
Concentration:	lot specific
Purification:	Affinity Purified
Conjugation:	Unconjugated
Storage:	Store at 4°C short term. Aliquot and store at -20°C long term. Avoid freeze/thaw cycles.
Stability:	1 year
Predicted Protein Size:	Observed MW (kDa):48
Gene Name:	tumor protein p53
Database Link:	<a href="#">Entrez Gene 7157 Human P04637</a>
Background:	Swiss-Prot Acc.P04637.
Synonyms:	FLJ92943; LFS1; p53; TRP53

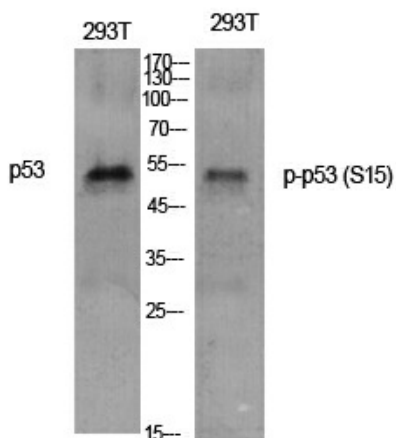


[View online »](#)

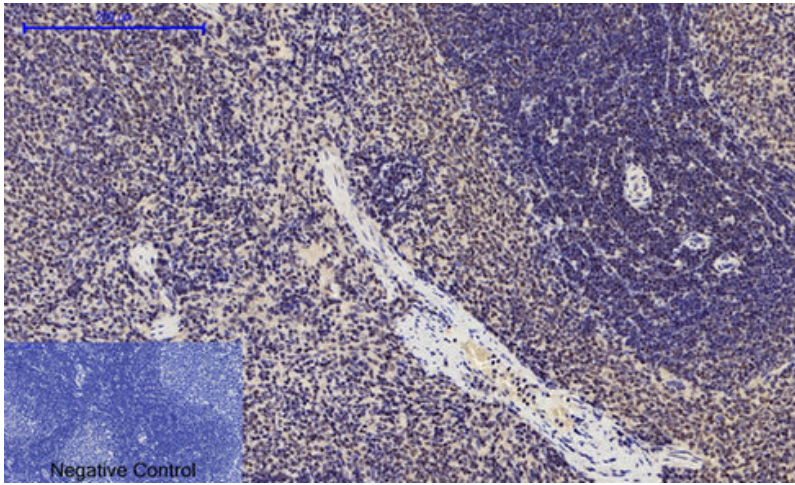
Product images:



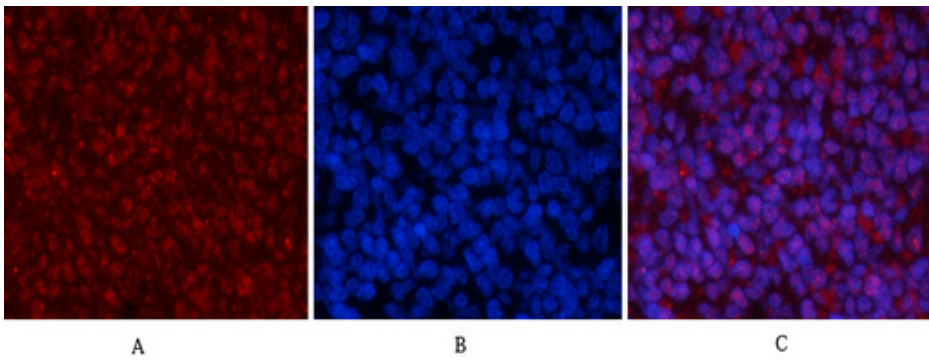
Western blot analysis of Phospho-p53 (Ser15) in HeLa treated with HU lysates using Phospho-p53 (Ser15) antibody. The lane on the right is blocked with the Phospho-peptide.



Western blot analysis of Phospho-p53 (Ser15) in untreated and Phospho-p53 (Ser15) treated with HU in 293T lysates using Phospho-p53 (Ser15) antibody



Immunohistochemistry analysis of paraffin-embedded rat spleen tissue using Phospho-p53 (Ser15) antibody. High-pressure and temperature Sodium Citrate pH 6.0 was used for antigen retrieval.



Immunofluorescence analysis of Phospho-p53 (Ser15) in rat spleen tissue using antibody.