

## Product datasheet for **TA385441**

### Topoisomerase I (TOP1) Rabbit Polyclonal Antibody

#### Product data:

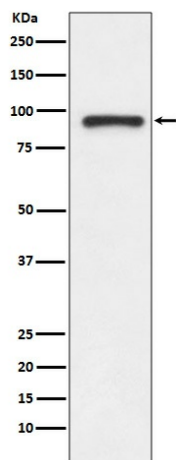
Product Type:	Primary Antibodies
Applications:	FC, IF, IHC, WB
Recommended Dilution:	WB: 1/1000-1/2000 IHC: 1/50-1/200 ICC/IF: 1/50-1/200 FC: 1/50
Reactivity:	Human, Mouse
Host:	Rabbit
Isotype:	IgG
Clonality:	Polyclonal
Immunogen:	A synthesized peptide derived from human TOP1
Formulation:	Rabbit IgG in phosphate buffered saline , pH 7.4, 150mM NaCl, 0.02% sodium azide and 50% glycerol.
Concentration:	lot specific
Purification:	Affinity Chromatography
Conjugation:	Unconjugated
Storage:	Store at 4°C short term. Aliquot and store at -20°C long term. Avoid freeze/thaw cycles.
Stability:	1 year
Predicted Protein Size:	91kDa
Gene Name:	topoisomerase (DNA) I
Database Link:	<a href="#">Entrez Gene 7150 Human P11387</a>
Background:	Swiss-Prot Acc.P11387.Releases the supercoiling and torsional tension of DNA introduced during the DNA replication and transcription by transiently cleaving and rejoining one strand of the DNA duplex. Introduces a single-strand break via transesterification at a target site in duplex DNA. The scissile phosphodiester is attacked by the catalytic tyrosine of the enzyme, resulting in the formation of a DNA-(3'-phosphotyrosyl)-enzyme intermediate and the expulsion of a 5'-OH DNA strand.



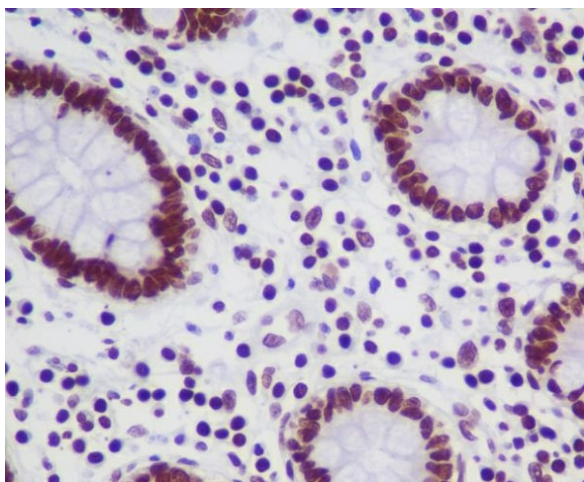
[View online »](#)

Synonyms: TOPI

### Product images:



Western blot analysis of TOP1 in Jurkat lysates using Topoisomerase I antibody.



Immunohistochemistry analysis of paraffin-embedded Human colon using TOP1 antibody. High-pressure and temperature Sodium Citrate pH 6.0 was used for antigen retrieval.