

Product datasheet for **TA385440S**

TOMM20 Rabbit Monoclonal Antibody [Clone ID: R03-7F6]

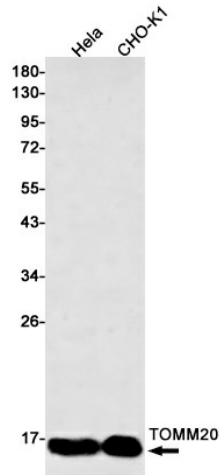
Product data:

Product Type:	Primary Antibodies
Clone Name:	R03-7F6
Applications:	IF, IHC, WB
Recommended Dilution:	WB: 1/2000 IHC: 1/20 ICC/IF: 1/50
Reactivity:	Human, Hamster
Host:	Rabbit
Isotype:	IgG
Clonality:	Monoclonal
Immunogen:	Recombinant protein of human TOMM20
Formulation:	50mM Tris-Glycine(pH 7.4), 0.15M NaCl, 40% Glycerol, 0.01% Sodium azide and 0.05% BSA
Concentration:	lot specific
Purification:	Affinity Purified
Conjugation:	Unconjugated
Storage:	Store at 4°C short term. Aliquot and store at -20°C long term. Avoid freeze/thaw cycles.
Stability:	1 year
Predicted Protein Size:	Calculated MW: 16 kDa; Observed MW: 16 kDa
Gene Name:	translocase of outer mitochondrial membrane 20
Database Link:	Entrez Gene 9804 Human Q15388
Background:	Swiss-Prot Acc.Q15388.Central component of the receptor complex responsible for the recognition and translocation of cytosolically synthesized mitochondrial preproteins. Together with TOM22 functions as the transit peptide receptor at the surface of the mitochondrion outer membrane and facilitates the movement of preproteins into the TOM40 translocation pore .
Synonyms:	KIAA0016; MAS20; MGC117367; MOM19; TOM20

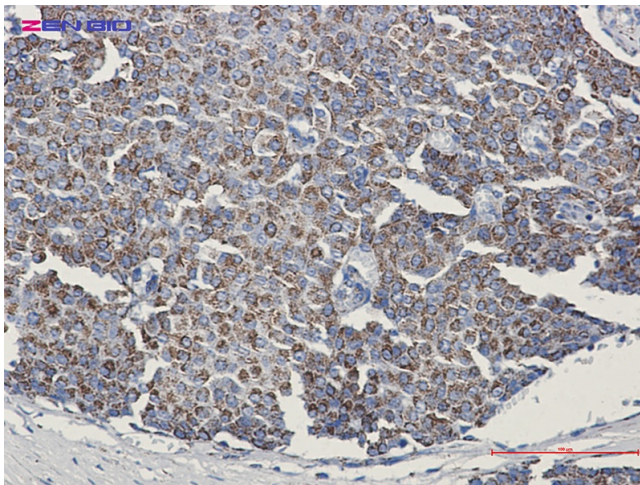


[View online »](#)

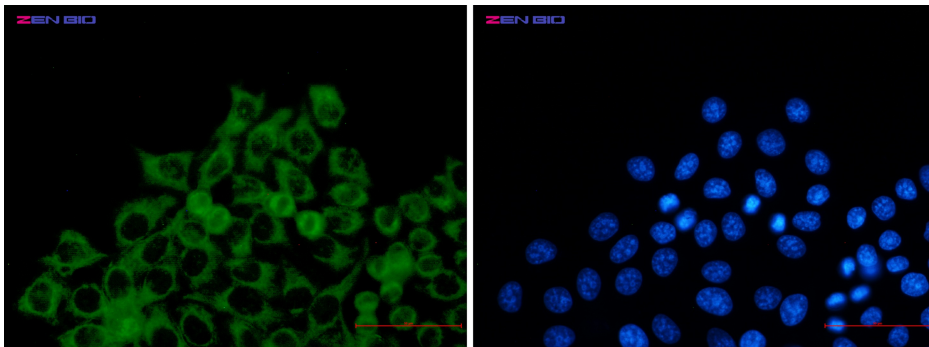
Product images:



Western blot analysis of TOMM20 in HeLa, CHO-K1 lysates using TOMM20 antibody.



Immunohistochemistry of TOMM20 in paraffin-embedded Human breast cancer tissue using TOMM20 Rabbit mAb at dilution 1/50



Immunocytochemistry of TOMM2 (green) in HeLa using TOMM2 Rabbit mAb at dilution 1/5, and DAPI(blue)