

## Product datasheet for **TA385439S**

### **TOMM20 Rabbit Polyclonal Antibody**

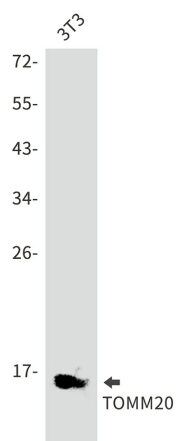
#### **Product data:**

<b>Product Type:</b>	Primary Antibodies
<b>Applications:</b>	FC, IF, IHC, WB
<b>Recommended Dilution:</b>	WB: 1/1000 IHC: 1/50 ICC/IF: 1/100 FC: 1/50
<b>Reactivity:</b>	Human, Mouse
<b>Host:</b>	Rabbit
<b>Isotype:</b>	IgG
<b>Clonality:</b>	Polyclonal
<b>Immunogen:</b>	Recombinant protein of human TOMM20
<b>Formulation:</b>	50mM Tris-Glycine(pH 7.4), 0.15M NaCl, 40% Glycerol, 0.01% Sodium azide and 0.05% BSA
<b>Concentration:</b>	lot specific
<b>Purification:</b>	Affinity Purified
<b>Conjugation:</b>	Unconjugated
<b>Storage:</b>	Store at 4°C short term. Aliquot and store at -20°C long term. Avoid freeze/thaw cycles.
<b>Stability:</b>	1 year
<b>Predicted Protein Size:</b>	Calculated MW: 16 kDa; Observed MW: 16 kDa
<b>Gene Name:</b>	translocase of outer mitochondrial membrane 20
<b>Database Link:</b>	<a href="#">Entrez Gene 9804 Human Q15388</a>
<b>Background:</b>	Swiss-Prot Acc.Q15388.
<b>Synonyms:</b>	KIAA0016; MAS20; MGC117367; MOM19; TOM20

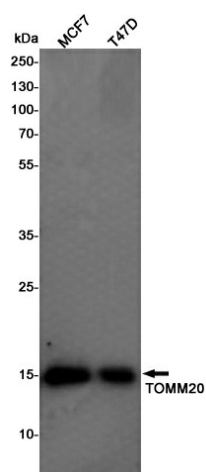


[View online »](#)

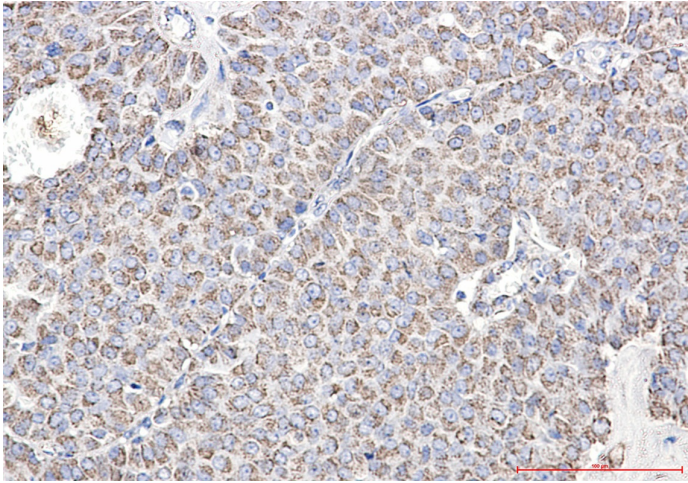
## Product images:



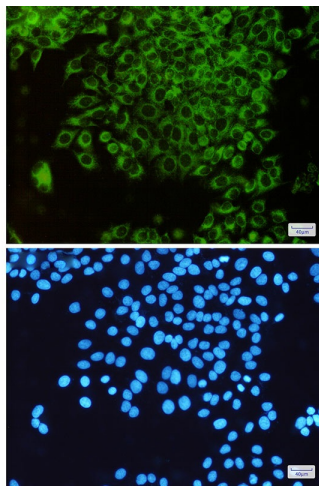
Western blot analysis of TOMM20 in 3T3 lysates using TOMM20 antibody.



Western blot analysis of TOMM20 in MCF-7, T47D lysates using TOMM20 antibody.



Immunohistochemistry analysis of paraffin-embedded Human breast cancer using TOMM20 antibody. High-pressure and temperature Sodium Citrate pH 6.0 was used for antigen retrieval.



Immunocytochemistry analysis of TOMM20 (green) in HeLa using TOMM20 antibody, and DAPI (blue)