

## Product datasheet for **TA385439M**

### **TOMM20 Rabbit Polyclonal Antibody**

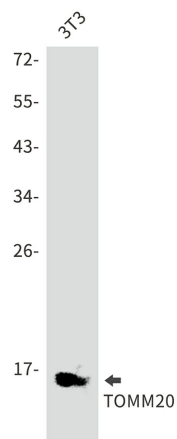
#### **Product data:**

Product Type:	Primary Antibodies
Applications:	FC, IF, IHC, WB
Recommended Dilution:	WB: 1/1000 IHC: 1/50 ICC/IF: 1/100 FC: 1/50
Reactivity:	Human, Mouse
Host:	Rabbit
Isotype:	IgG
Clonality:	Polyclonal
Immunogen:	Recombinant protein of human TOMM20
Formulation:	50mM Tris-Glycine(pH 7.4), 0.15M NaCl, 40% Glycerol, 0.01% Sodium azide and 0.05% BSA
Concentration:	lot specific
Purification:	Affinity Purified
Conjugation:	Unconjugated
Storage:	Store at 4°C short term. Aliquot and store at -20°C long term. Avoid freeze/thaw cycles.
Stability:	1 year
Predicted Protein Size:	Calculated MW: 16 kDa; Observed MW: 16 kDa
Gene Name:	translocase of outer mitochondrial membrane 20
Database Link:	<a href="#">Entrez Gene 9804 Human Q15388</a>
Background:	Swiss-Prot Acc.Q15388.
Synonyms:	KIAA0016; MAS20; MGC117367; MOM19; TOM20

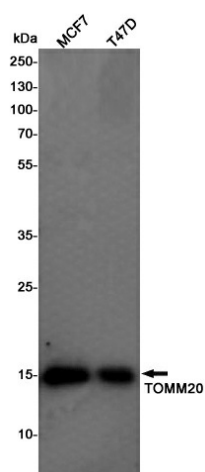


[View online »](#)

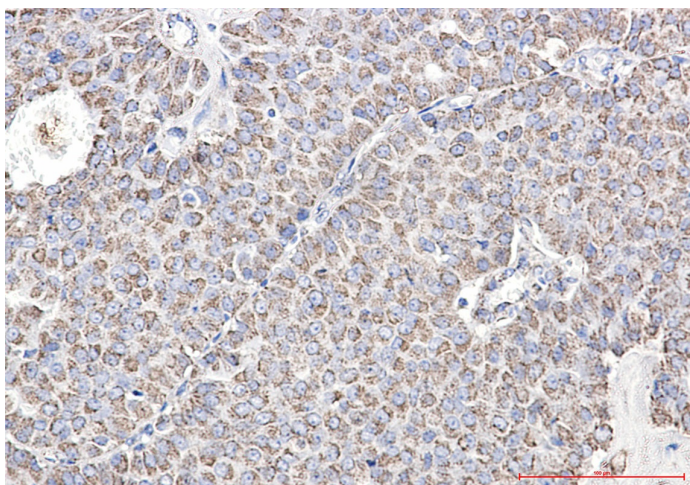
## Product images:



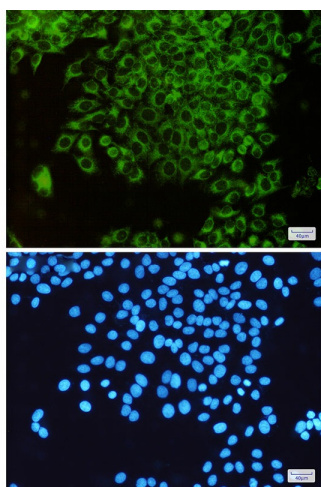
Western blot analysis of TOMM20 in 3T3 lysates using TOMM20 antibody.



Western blot analysis of TOMM20 in MCF-7, T47D lysates using TOMM20 antibody.



Immunohistochemistry analysis of paraffin-embedded Human breast cancer using TOMM20 antibody. High-pressure and temperature Sodium Citrate pH 6.0 was used for antigen retrieval.



Immunocytochemistry analysis of TOMM20 (green) in HeLa using TOMM20 antibody, and DAPI (blue)