

## Product datasheet for **TA385438**

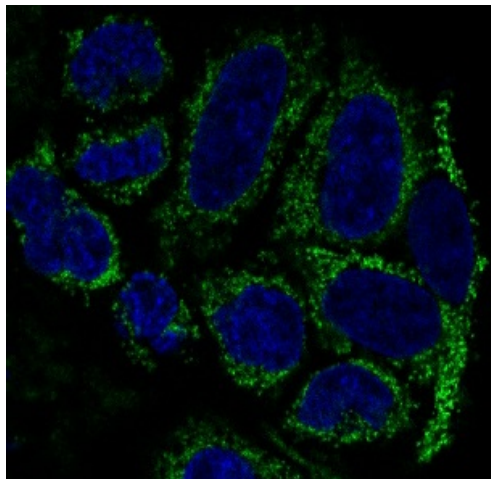
### **TOMM20 Rabbit Polyclonal Antibody**

#### **Product data:**

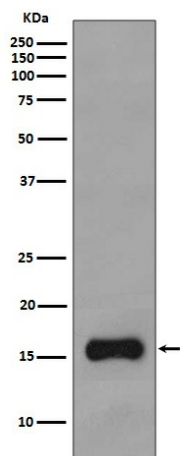
<b>Product Type:</b>	Primary Antibodies
<b>Applications:</b>	FC, IF, IHC, WB
<b>Recommended Dilution:</b>	WB: 1/500-1/2000 IHC: 1/50-1/200 ICC/IF: 1/50-1/200 FC: 1/100
<b>Reactivity:</b>	Human, Mouse, Rat
<b>Host:</b>	Rabbit
<b>Isotype:</b>	IgG
<b>Clonality:</b>	Polyclonal
<b>Immunogen:</b>	A synthesized peptide derived from human TOMM20
<b>Formulation:</b>	Rabbit IgG in phosphate buffered saline , pH 7.4, 150mM NaCl, 0.02% sodium azide and 50% glycerol.
<b>Concentration:</b>	lot specific
<b>Purification:</b>	Affinity Chromatography
<b>Conjugation:</b>	Unconjugated
<b>Storage:</b>	Store at 4°C short term. Aliquot and store at -20°C long term. Avoid freeze/thaw cycles.
<b>Stability:</b>	1 year
<b>Predicted Protein Size:</b>	16kDa
<b>Gene Name:</b>	translocase of outer mitochondrial membrane 20
<b>Database Link:</b>	<a href="#">Entrez Gene 9804 Human Q15388</a>
<b>Background:</b>	Swiss-Prot Acc.Q15388.Central component of the receptor complex responsible for the recognition and translocation of cytosolically synthesized mitochondrial preproteins. Together with TOM22 functions as the transit peptide receptor at the surface of the mitochondrion outer membrane and facilitates the movement of preproteins into the TOM40 translocation pore.
<b>Synonyms:</b>	KIAA0016; MAS20; MGC117367; MOM19; TOM20



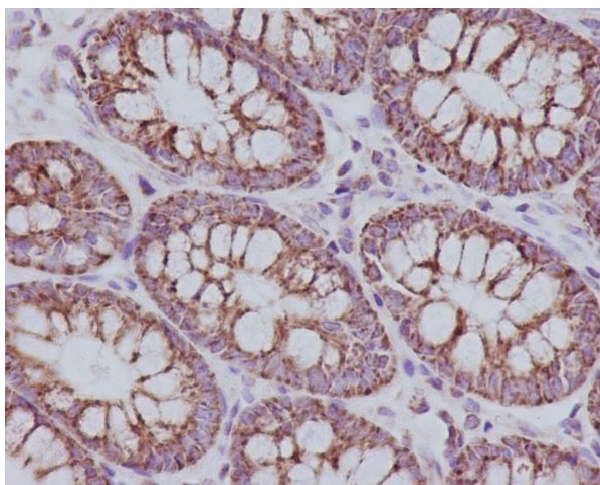
[View online »](#)

**Product images:**

Immunofluorescent analysis of HeLa cells, using TOMM20 Antibody .



Western blot analysis of TOMM20 in HepG2 lysates using TOMM20 antibody.



Immunohistochemical analysis of paraffin-embedded human colon, using TOMM20 Antibody.