

## Product datasheet for **TA385430S**

### **TNFRSF11A Rabbit Polyclonal Antibody**

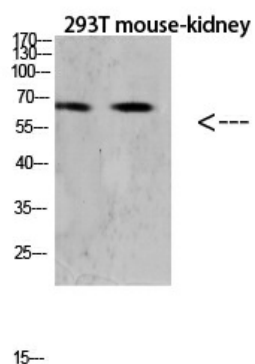
#### **Product data:**

Product Type:	Primary Antibodies
Applications:	ELISA, IHC, WB
Recommended Dilution:	WB: 1/500-2000 IHC-p: 1/500-200
Reactivity:	Human, Mouse, Rat
Host:	Rabbit
Isotype:	IgG
Clonality:	Polyclonal
Immunogen:	Synthetic peptide from human protein at AA range: 60-120
Formulation:	Liquid in PBS containing 50% glycerol, 0.5% BSA and 0.02% sodium azide, pH 7.3.
Concentration:	lot specific
Purification:	Affinity Purified
Conjugation:	Unconjugated
Storage:	Store at 4°C short term. Aliquot and store at -20°C long term. Avoid freeze/thaw cycles.
Stability:	1 year
Predicted Protein Size:	Observed MW (kDa):66
Database Link:	<a href="#">Q9Y6Q6</a>
Background:	Swiss-Prot Acc.Q9Y6Q6.

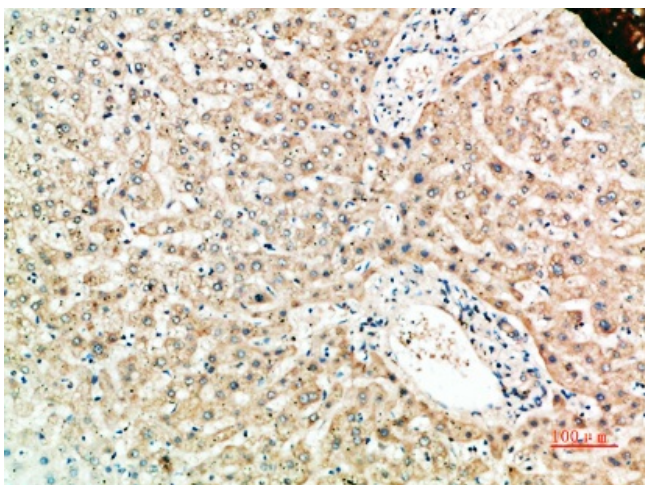


[View online »](#)

## Product images:



Western blot analysis of RANK in Hela lysates using RANK antibody.



Immunohistochemistry analysis of paraffin-embedded Human liver using RANK antibody. High-pressure and temperature Sodium Citrate pH 6.0 was used for antigen retrieval.