

## Product datasheet for **TA385421M**

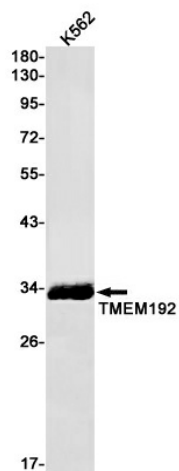
### **TMEM192 Rabbit Monoclonal Antibody [Clone ID: R02-4J4]**

#### **Product data:**

Product Type:	Primary Antibodies
Clone Name:	R02-4J4
Applications:	WB
Recommended Dilution:	WB: 1/1000-1/2000
Reactivity:	Human
Host:	Rabbit
Isotype:	IgG
Clonality:	Monoclonal
Immunogen:	Recombinant protein of human TMEM192
Formulation:	50mM Tris-Glycine(pH 7.4), 0.15M NaCl, 40% Glycerol, 0.01% Sodium azide and 0.05% BSA
Concentration:	lot specific
Purification:	Affinity Purified
Conjugation:	Unconjugated
Storage:	Store at 4°C short term. Aliquot and store at -20°C long term. Avoid freeze/thaw cycles.
Stability:	1 year
Predicted Protein Size:	Calculated MW: 31 kDa; Observed MW: 31 kDa
Gene Name:	transmembrane protein 192
Database Link:	<a href="#">Entrez Gene 201931 Human Q8IY95</a>
Background:	Swiss-Prot Acc.Q8IY95.Transmembrane protein 192
Synonyms:	FLJ38482

[View online »](#)

## Product images:



Western blot analysis of TMEM192 in K562 lysates using Transmembrane Protein 192 antibody.