

Product datasheet for **TA385420**

STING (TMEM173) Rabbit Polyclonal Antibody

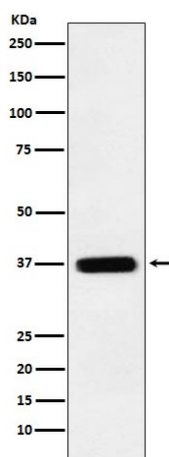
Product data:

Product Type:	Primary Antibodies
Applications:	FC, IF, WB
Recommended Dilution:	WB: 1/500-1/2000 ICC/IF: 1/100-1/500 FC: 1/20
Reactivity:	Human
Host:	Rabbit
Isotype:	IgG
Clonality:	Polyclonal
Immunogen:	A synthesized peptide derived from human TMEM173
Formulation:	Rabbit IgG in phosphate buffered saline , pH 7.4, 150mM NaCl, 0.02% sodium azide and 50% glycerol.
Concentration:	lot specific
Purification:	Affinity Chromatography
Conjugation:	Unconjugated
Storage:	Store at 4°C short term. Aliquot and store at -20°C long term. Avoid freeze/thaw cycles.
Stability:	1 year
Predicted Protein Size:	37kDa
Gene Name:	transmembrane protein 173
Database Link:	Entrez Gene 340061 Human Q86WV6
Background:	Swiss-Prot Acc.Q86WV6.Facilitator of innate immune signaling that promotes the production of type I interferon (IFN-alpha and IFN-beta). Innate immune response is triggered in response to non-CpG double-stranded DNA from viruses and bacteria delivered to the cytoplasm.
Synonyms:	ERIS; FLJ38577; hMITA; hSTING; MITA; MPYS; NET23; STING



[View online »](#)

Product images:



Western blot analysis of TMEM173 in HeLa lysates using Transmembrane Protein 173 antibody.