

## Product datasheet for **TA385418M**

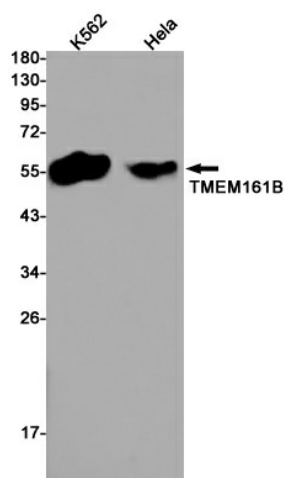
### **TMEM161B Rabbit Monoclonal Antibody [Clone ID: R08-6J4]**

#### **Product data:**

Product Type:	Primary Antibodies
Clone Name:	R08-6J4
Applications:	IP, WB
Recommended Dilution:	WB: 1/1000 IP: 1/20
Reactivity:	Human
Host:	Rabbit
Isotype:	IgG
Clonality:	Monoclonal
Immunogen:	Recombinant protein of human TMEM161B
Formulation:	50mM Tris-Glycine(pH 7.4), 0.15M NaCl, 40% Glycerol, 0.01% Sodium azide and 0.05% BSA
Concentration:	lot specific
Purification:	Affinity Purified
Conjugation:	Unconjugated
Storage:	Store at 4°C short term. Aliquot and store at -20°C long term. Avoid freeze/thaw cycles.
Stability:	1 year
Predicted Protein Size:	Calculated MW: 56 kDa; Observed MW: 56 kDa
Gene Name:	transmembrane protein 161B
Database Link:	<a href="#">Entrez Gene 153396 Human Q8NDZ6</a>
Background:	Swiss-Prot Acc.Q8NDZ6.Transmembrane protein 161B
Synonyms:	FLB3342; MGC33214; PRO1313


[View online »](#)

## Product images:



Western blot analysis of TMEM161B in K562, HeLa lysates using Transmembrane Protein 161B antibody.