

Product datasheet for **TA385416**

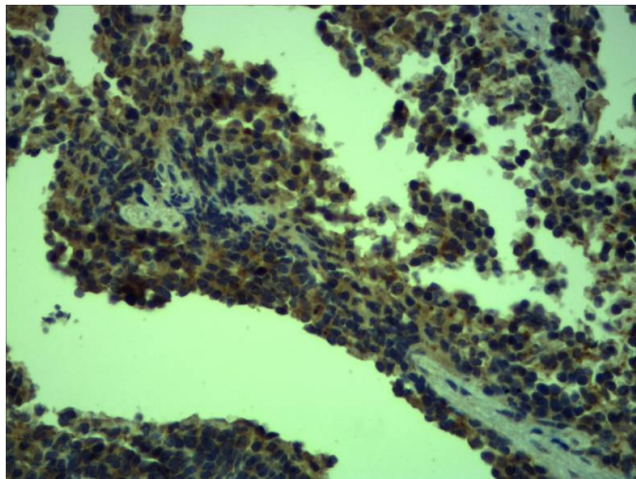
TLR4 Rabbit Polyclonal Antibody

Product data:

Product Type:	Primary Antibodies
Applications:	IHC
Recommended Dilution:	IHC: 1/200-500
Reactivity:	Human, Mouse, Rat
Host:	Rabbit
Isotype:	IgG
Clonality:	Polyclonal
Immunogen:	Recombinant Protein of TLR4
Formulation:	Liquid in PBS containing 50% glycerol, 0.5% BSA and 0.02% sodium azide, pH 7.3.
Concentration:	lot specific
Purification:	Affinity Purified
Conjugation:	Unconjugated
Storage:	Store at 4°C short term. Aliquot and store at -20°C long term. Avoid freeze/thaw cycles.
Stability:	1 year
Gene Name:	toll like receptor 4
Database Link:	Entrez Gene 7099 Human O00206
Background:	Swiss-Prot Acc.O00206.
Synonyms:	ARMD10; CD284; hToll; TOLL



[View online »](#)

Product images:

Immunohistochemistry analysis of paraffin-embedded mouse Spleen Tissue using Toll-Like Receptor 4 antibody. High-pressure and temperature Sodium Citrate pH 6.0 was used for antigen retrieval.