

## Product datasheet for **TA385414S**

### Tlr2 Rabbit Monoclonal Antibody [Clone ID: R06-8B6]

#### Product data:

Product Type:	Primary Antibodies
Clone Name:	R06-8B6
Applications:	IF, IHC, WB
Recommended Dilution:	WB: 1/1000 IHC: 1/50 ICC/IF: 1/20
Reactivity:	Human, Mouse
Host:	Rabbit
Isotype:	IgG
Clonality:	Monoclonal
Immunogen:	Recombinant protein of mouse TLR2
Formulation:	50mM Tris-Glycine(pH 7.4), 0.15M NaCl, 40% Glycerol, 0.01% Sodium azide and 0.05% BSA
Concentration:	lot specific
Purification:	Affinity Purified
Conjugation:	Unconjugated
Storage:	Store at 4°C short term. Aliquot and store at -20°C long term. Avoid freeze/thaw cycles.
Stability:	1 year
Predicted Protein Size:	Calculated MW: 89 kDa; Observed MW: 89 kDa
Gene Name:	toll-like receptor 2
Database Link:	<a href="#">Entrez Gene 24088 Mouse</a> <a href="#">Q9QUN7</a>



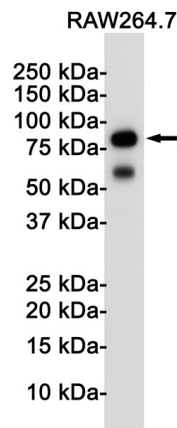
[View online »](#)

**Background:**

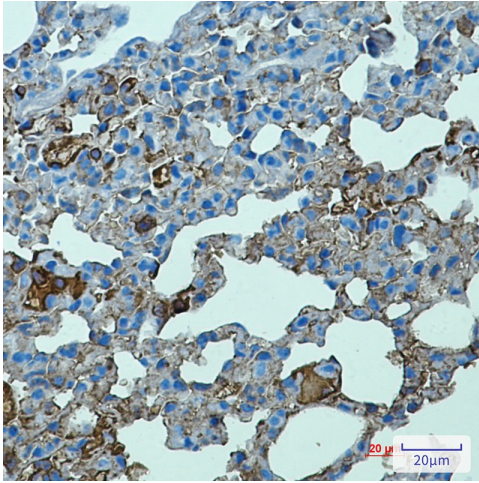
Swiss-Prot Acc.Q9QUN7.Cooperates with LY96 to mediate the innate immune response to bacterial lipoproteins and other microbial cell wall components. Cooperates with TLR1 or TLR6 to mediate the innate immune response to bacterial lipoproteins or lipopeptides. Acts via MYD88 and TRAF6, leading to NF-kappa-B activation, cytokine secretion and the inflammatory response (PubMed:15690042). May also promote apoptosis in response to lipoproteins . Forms activation clusters composed of several receptors depending on the ligand, these clusters trigger signaling from the cell surface and subsequently are targeted to the Golgi in a lipid-raft dependent pathway. Forms the cluster TLR2:TLR6:CD14:CD36 in response to diacylated lipopeptides and TLR2:TLR1:CD14 in response to triacylated lipopeptides . Recognizes M.tuberculosis major T-antigen EsxA (ESAT-6) which inhibits downstream MYD88-dependent signaling (PubMed:17486091). Acts as the major receptor for M.tuberculosis lipoproteins LprA, LprG, LpqH and PhoS1 (pstS1), in conjunction with TLR1 and for some but not all lipoproteins CD14 and/or CD36. The lipoproteins act as agonists to modulate antigen presenting cell functions in response to the pathogen (PubMed:19362712). Recombinant MPT83 from M.tuberculosis stimulates secretion of cytokines (TNF-alpha, IL-6 and IL-12p40) by mouse macrophage cell lines in a TLR2-dependent fashion, which leads to increased host innate immunity responses against the bacterium (PubMed:22174456). Lung macrophages which express low levels of TLR2 respond poorly to stimulation by M.tuberculosis LpqH (PubMed:19362712). Required for normal uptake of M.tuberculosis, a process that is inhibited by M.tuberculosis LppM (PubMed:27220037).

**Synonyms:**

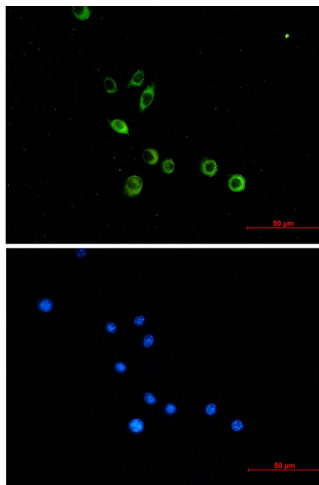
CD282; TIL4

**Product images:**

Western blot analysis of TLR2 in Raw264.7 lysates using TLR2 antibody.



Immunohistochemistry analysis of paraffin-embedded mouse lung using Toll Like Receptor 2 antibody. High-pressure and temperature Sodium Citrate pH 6.0 was used for antigen retrieval.



Immunocytochemistry analysis of TLR2 (green) in Raw264.7 using TLR2 antibody, and DAPI (blue)