

## Product datasheet for **TA385404**

### Thrombomodulin (THBD) Rabbit Polyclonal Antibody

#### Product data:

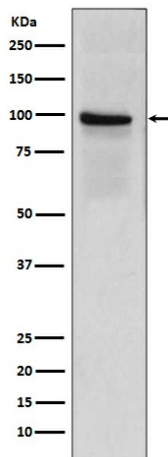
Product Type:	Primary Antibodies
Applications:	IF, IHC, IP, WB
Recommended Dilution:	WB: 1/500-1/2000 IHC: 1/50-1/200 ICC/IF: 1/50-1/200 IP: 1/50
Reactivity:	Human
Host:	Rabbit
Isotype:	IgG
Clonality:	Polyclonal
Immunogen:	A synthesized peptide derived from human Thrombomodulin
Formulation:	Rabbit IgG in phosphate buffered saline , pH 7.4, 150mM NaCl, 0.02% sodium azide and 50% glycerol.
Concentration:	lot specific
Purification:	Affinity Chromatography
Conjugation:	Unconjugated
Storage:	Store at 4°C short term. Aliquot and store at -20°C long term. Avoid freeze/thaw cycles.
Stability:	1 year
Predicted Protein Size:	60kDa
Gene Name:	thrombomodulin
Database Link:	<a href="#">Entrez Gene 7056 Human P07204</a>
Background:	Swiss-Prot Acc.P07204.Thrombomodulin (TM), also called CD141, is a type I membrane receptor that is specific to endothelial cells. TM has a cysteine-rich extracellular domain with six EGF-like regions. It forms a complex with Thrombin, which activates Protein C to generate activated Protein C (APC), an anticoagulant enzyme. APC together with Protein S inhibits coagulation by inactivating Factors Va and VIIIa. Deletion of the TM gene results in embryonic lethality in mice.



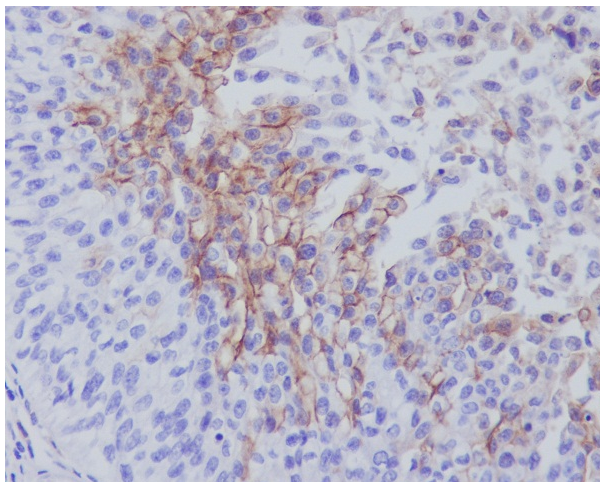
[View online »](#)

Synonyms: AHUS6; CD141; fetomodulin; THRM; thrombomodulin; TM

### Product images:



Western blot analysis of Thrombomodulin in Human placenta lysates using Thrombomodulin antibody.



Immunohistochemistry analysis of paraffin-embedded Human bladder using Thrombomodulin antibody. High-pressure and temperature Sodium Citrate pH 6.0 was used for antigen retrieval.