

Product datasheet for **TA385402M**

Transglutaminase 2 (TGM2) Rabbit Polyclonal Antibody

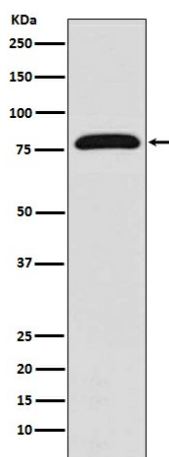
Product data:

Product Type:	Primary Antibodies
Applications:	IHC, IP, WB
Recommended Dilution:	WB: 1/1000-1/5000 IHC: 1/50-1/200 IP: 1/50
Reactivity:	Human, Mouse
Host:	Rabbit
Isotype:	IgG
Clonality:	Polyclonal
Immunogen:	A synthesized peptide derived from human TGM2
Formulation:	Rabbit IgG in phosphate buffered saline , pH 7.4, 150mM NaCl, 0.02% sodium azide and 50% glycerol.
Concentration:	lot specific
Purification:	Affinity Chromatography
Conjugation:	Unconjugated
Storage:	Store at 4°C short term. Aliquot and store at -20°C long term. Avoid freeze/thaw cycles.
Stability:	1 year
Predicted Protein Size:	77kDa
Gene Name:	transglutaminase 2
Database Link:	Entrez Gene 7052 Human P21980
Background:	Swiss-Prot Acc.P21980.Catalyzes the cross-linking of proteins and the conjugation of polyamines to proteins.
Synonyms:	G-ALPHA-h; GNAH; protein-glutamine-gamma-glutamyltransferase; TG(C); TG2; TGase-H; TGC; Transglutaminase-2



[View online »](#)

Product images:



Western blot analysis of TGM2 in HUVEC lysates using Transglutaminase 2 antibody.