

## Product datasheet for **TA385401M**

### TGF beta Receptor II (TGFB2) Rabbit Polyclonal Antibody

#### Product data:

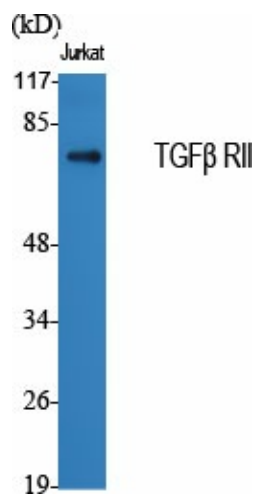
Product Type:	Primary Antibodies
Applications:	ELISA, IF, IHC, WB
Recommended Dilution:	IF: 1/50-200 WB: 1/500-1/2000 IHC: 1/100-1/300 ELISA: 1/20000
Reactivity:	Human, Mouse, Rat
Host:	Rabbit
Isotype:	IgG
Clonality:	Polyclonal
Immunogen:	The antiserum was produced against synthesized peptide derived from human TGF beta Receptor II. AA range:91-140
Formulation:	Liquid in PBS containing 50% glycerol, 0.5% BSA and 0.02% sodium azide, pH 7.3.
Concentration:	lot specific
Purification:	Affinity Purified
Conjugation:	Unconjugated
Storage:	Store at 4°C short term. Aliquot and store at -20°C long term. Avoid freeze/thaw cycles.
Stability:	1 year
Predicted Protein Size:	Observed MW (kDa):65
Gene Name:	transforming growth factor beta receptor 2
Database Link:	<a href="#">Entrez Gene 7048 Human P37173</a>
Background:	Swiss-Prot Acc.P37173.
Synonyms:	AAT3; FAA3; HNPCC6; LDS1B; LDS2B; MFS2; RIIC; TAAD2; TbetaR-II; TGFbeta-RII; TGFR-2



[View online »](#)



## Product images:



Western blot analysis of TGF beta Receptor II in Jurkat lysates using TGF beta Receptor II antibody.