

Product datasheet for **TA385400S**

TGF beta Receptor I (TGFBR1) Rabbit Polyclonal Antibody

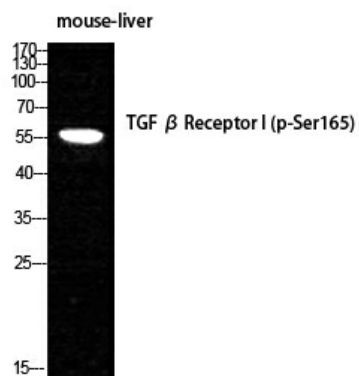
Product data:

Product Type:	Primary Antibodies
Applications:	ELISA, IF, IHC, WB
Recommended Dilution:	WB: 1/500-2000 IF: 1/50-300 IHC: 1/50-300
Reactivity:	Human, Mouse, Rat
Host:	Rabbit
Isotype:	IgG
Clonality:	Polyclonal
Immunogen:	The antiserum was produced against synthesized peptide derived from human TGF beta Receptor I around the phosphorylation site of Ser165. AA range:131-180 (Phosphorylated)
Formulation:	Liquid in PBS containing 50% glycerol, 0.5% BSA and 0.02% sodium azide, pH 7.3.
Concentration:	lot specific
Purification:	Affinity Purified
Conjugation:	Unconjugated
Storage:	Store at 4°C short term. Aliquot and store at -20°C long term. Avoid freeze/thaw cycles.
Stability:	1 year
Predicted Protein Size:	Observed MW (kDa): 56
Gene Name:	transforming growth factor beta receptor 1
Database Link:	Entrez Gene 7046 Human P36897
Background:	Swiss-Prot Acc.P36897.
Synonyms:	AAT5; ACVRLK4; ALK-5; ALK5; LDS1A; LDS2A; SKR4; TbetaR-I; TGFR-1



[View online »](#)

Product images:



Western blot analysis of Phospho-TGF beta Receptor I (Ser165) in mouse LIVER lysates using Phospho-TGF beta Receptor I (Ser165) antibody.