

## Product datasheet for **TA385400**

### TGF beta Receptor I (TGFBR1) Rabbit Polyclonal Antibody

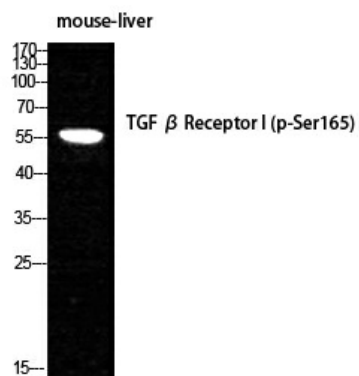
#### Product data:

|                         |  |
|-------------------------|--|
| Product Type:           | Primary Antibodies   |
| Applications:           | ELISA, IF, IHC, WB   |
| Recommended Dilution:   | WB: 1/500-2000<br>IF: 1/50-300<br>IHC: 1/50-300  |
| Reactivity:             | Human, Mouse, Rat  |
| Host:                   | Rabbit   |
| Isotype:                | IgG  |
| Clonality:              | Polyclonal   |
| Immunogen:              | The antiserum was produced against synthesized peptide derived from human TGF beta Receptor I around the phosphorylation site of Ser165. AA range:131-180 (Phosphorylated) |
| Formulation:            | Liquid in PBS containing 50% glycerol, 0.5% BSA and 0.02% sodium azide, pH 7.3.  |
| Concentration:          | lot specific   |
| Purification:           | Affinity Purified  |
| Conjugation:            | Unconjugated   |
| Storage:                | Store at 4°C short term. Aliquot and store at -20°C long term. Avoid freeze/thaw cycles.   |
| Stability:              | 1 year   |
| Predicted Protein Size: | Observed MW (kDa): 56  |
| Gene Name:              | transforming growth factor beta receptor 1   |
| Database Link:          | <a href="#">Entrez Gene 7046 Human P36897</a>  |
| Background:             | Swiss-Prot Acc.P36897.   |
| Synonyms:               | AAT5; ACVRLK4; ALK-5; ALK5; LDS1A; LDS2A; SKR4; TbetaR-I; TGFR-1   |



[View online »](#)

## Product images:



Western blot analysis of Phospho-TGF beta Receptor I (Ser165) in mouse LIVER lysates using Phospho-TGF beta Receptor I (Ser165) antibody.