

Product datasheet for **TA385397S**

TGF beta 1 (TGFB1) Rabbit Monoclonal Antibody [Clone ID: R08-8B7]

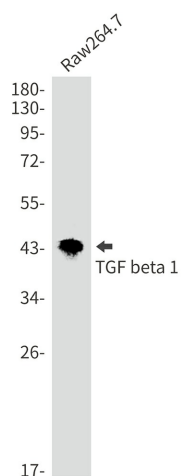
Product data:

Product Type:	Primary Antibodies
Clone Name:	R08-8B7
Applications:	WB
Recommended Dilution:	WB: 1/1000
Reactivity:	Human, Mouse, Rat
Host:	Rabbit
Isotype:	IgG
Clonality:	Monoclonal
Immunogen:	Recombinant protein of mouse TGF beta 1
Formulation:	50mM Tris-Glycine(pH 7.4), 0.15M NaCl, 40% Glycerol, 0.01% Sodium azide and 0.05% BSA
Concentration:	lot specific
Purification:	Affinity Purified
Conjugation:	Unconjugated
Storage:	Store at 4°C short term. Aliquot and store at -20°C long term. Avoid freeze/thaw cycles.
Stability:	1 year
Predicted Protein Size:	Calculated MW: 44 kDa; Observed MW: 44 kDa
Gene Name:	transforming growth factor beta 1
Database Link:	Entrez Gene 7040 Human P04202
Synonyms:	CED; DPD1; LAP; TGF-beta-1; TGFB; TGFbeta

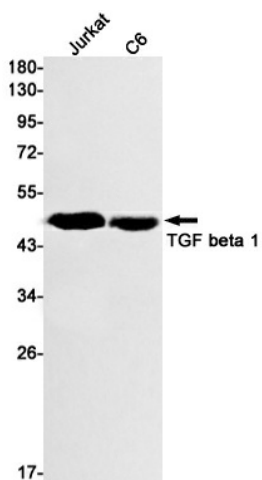


[View online »](#)

Product images:



Western blot analysis of TGF beta 1 in Raw264.7 lysates using TGF beta 1 antibody.



Western blot analysis of TGF beta 1 in Jurkat, C6 lysates using TGF beta 1 antibody.