

Product datasheet for **TA385396M**

TGF beta 1 (TGFB1) Rabbit Polyclonal Antibody

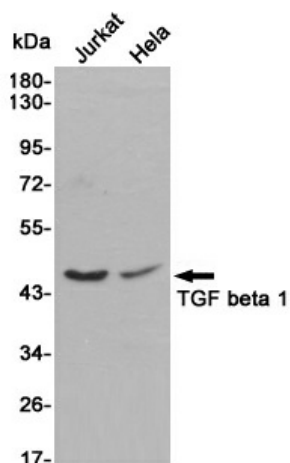
Product data:

Product Type:	Primary Antibodies
Applications:	ELISA, IF, IHC, WB
Recommended Dilution:	WB: 1/500-1/2000 IHC: 1/100-1/300 IF: 1/200-1/1000 ELISA: 1/20000
Reactivity:	Human, Mouse, Rat
Host:	Rabbit
Isotype:	IgG
Clonality:	Polyclonal
Immunogen:	The antiserum was produced against synthesized peptide derived from human TGF beta1. AA range:336-385
Formulation:	Liquid in PBS containing 50% glycerol, 0.5% BSA and 0.02% sodium azide, pH 7.3.
Concentration:	lot specific
Purification:	Affinity Purified
Conjugation:	Unconjugated
Storage:	Store at 4°C short term. Aliquot and store at -20°C long term. Avoid freeze/thaw cycles.
Stability:	1 year
Predicted Protein Size:	Observed MW (kDa):44
Gene Name:	transforming growth factor beta 1
Database Link:	Entrez Gene 7040 Human P01137
Background:	Swiss-Prot Acc.P01137.
Synonyms:	CED; DPD1; LAP; TGF-beta-1; TGFB; TGFbeta

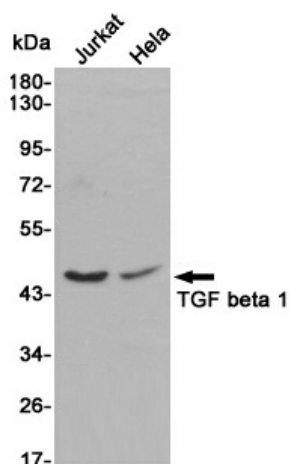


[View online »](#)

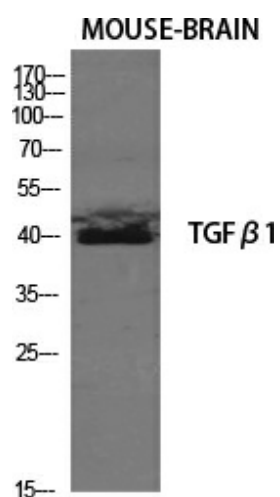
Product images:



Western blot analysis of TGF beta 1 in Jurkat and HeLa lysates using TGF beta 1 antibody.



Western blot detection of TGF beta 1 in Jurkat and HeLa cell lysates using TGF beta 1 rabbit pAb (1:1000 diluted). Predicted band size: 44kDa. Observed band size: 45-60kDa.



Western Blot analysis of mouse-brain cells using TGFu3b21 Polyclonal Antibody