

## Product datasheet for **TA385395S**

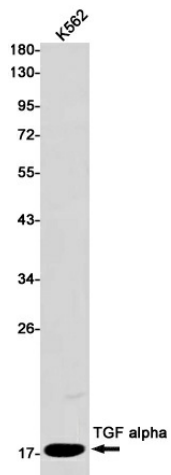
### TGF alpha (TGFA) Rabbit Monoclonal Antibody [Clone ID: R07-6J8]

#### Product data:

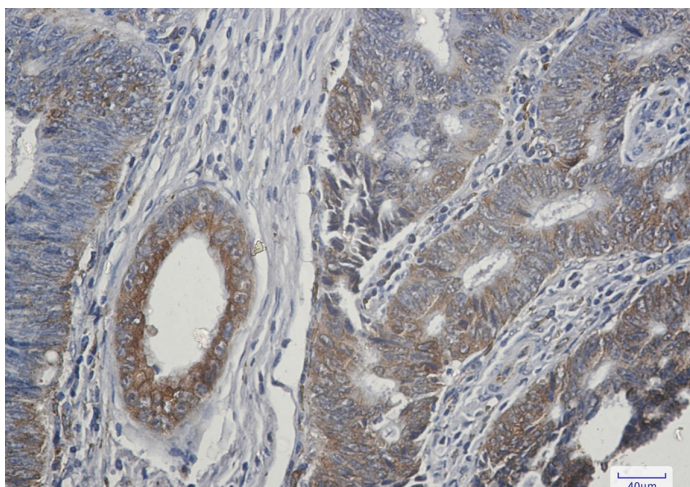
Product Type:	Primary Antibodies
Clone Name:	R07-6J8
Applications:	IHC, IP, WB
Recommended Dilution:	WB: 1/1000 IHC: 1/500 IP: 1/20
Reactivity:	Human
Host:	Rabbit
Isotype:	IgG
Clonality:	Monoclonal
Immunogen:	Recombinant protein of human TGF alpha
Formulation:	50mM Tris-Glycine(pH 7.4), 0.15M NaCl, 40% Glycerol, 0.01% Sodium azide and 0.05% BSA
Concentration:	lot specific
Purification:	Affinity Purified
Conjugation:	Unconjugated
Storage:	Store at 4°C short term. Aliquot and store at -20°C long term. Avoid freeze/thaw cycles.
Stability:	1 year
Predicted Protein Size:	Calculated MW: 17 kDa; Observed MW: 17 kDa
Gene Name:	transforming growth factor alpha
Database Link:	<a href="#">Entrez Gene 7039 Human P01135</a>
Background:	Swiss-Prot Acc.P01135.TGF alpha is a mitogenic polypeptide that is able to bind to the EGF receptor/EGFR and to act synergistically with TGF beta to promote anchorage-independent cell proliferation in soft agar.
Synonyms:	TFGA



[View online »](#)

**Product images:**

Western blot analysis of TGF alpha in K562 lysates using TGF alpha antibody.



Immunohistochemistry analysis of paraffin-embedded Human colon cancer using TGF alpha antibody. High-pressure and temperature Sodium Citrate pH 6.0 was used for antigen retrieval.