

Product datasheet for **TA385391**

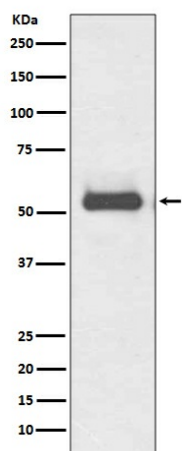
TRK fused gene (TFG) Rabbit Polyclonal Antibody

Product data:

Product Type:	Primary Antibodies
Applications:	IF, IHC, IP, WB
Recommended Dilution:	WB: 1/1000 IHC: 1/50-1/200 ICC/IF: 1/100-1/500 IP: 1/50
Reactivity:	Human, Mouse, Rat
Host:	Rabbit
Isotype:	IgG
Clonality:	Polyclonal
Immunogen:	A synthesized peptide derived from human TRK fused gene
Formulation:	Rabbit IgG in phosphate buffered saline , pH 7.4, 150mM NaCl, 0.02% sodium azide and 50% glycerol.
Concentration:	lot specific
Purification:	Affinity Chromatography
Conjugation:	Unconjugated
Storage:	Store at 4°C short term. Aliquot and store at -20°C long term. Avoid freeze/thaw cycles.
Stability:	1 year
Predicted Protein Size:	55kDa
Gene Name:	TRK-fused gene
Database Link:	Entrez Gene 10342 Human Q92734
Background:	Swiss-Prot Acc.Q92734.Plays a role in the normal dynamic function of the endoplasmic reticulum (ER) and its associated microtubules.
Synonyms:	FLJ36137; TF6; TRK-fused; TRKT3



[View online »](#)

Product images:

Western blot analysis of TRK fused gene in HeLa lysates using TFG antibody.