

Product datasheet for **TA385390**

mtTFA (TFAM) Rabbit Polyclonal Antibody

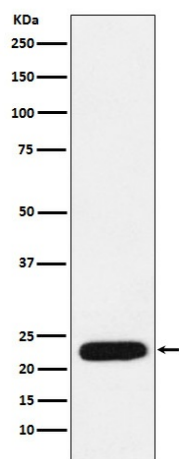
Product data:

Product Type:	Primary Antibodies
Applications:	IF, IHC, IP, WB
Recommended Dilution:	WB: 1/1000-1/5000 IHC: 1/50-1/200 ICC/IF: 1/50-1/200 IP: 1/50
Reactivity:	Human
Host:	Rabbit
Isotype:	IgG
Clonality:	Polyclonal
Immunogen:	A synthesized peptide derived from human mtTFA
Formulation:	Rabbit IgG in phosphate buffered saline , pH 7.4, 150mM NaCl, 0.02% sodium azide and 50% glycerol.
Concentration:	lot specific
Purification:	Affinity Chromatography
Conjugation:	Unconjugated
Storage:	Store at 4°C short term. Aliquot and store at -20°C long term. Avoid freeze/thaw cycles.
Stability:	1 year
Predicted Protein Size:	24kDa
Gene Name:	transcription factor A, mitochondrial
Database Link:	Entrez Gene 7019 Human Q00059
Background:	Swiss-Prot Acc.Q00059.Binds to the mitochondrial light strand promoter and functions in mitochondrial transcription regulation. Required for accurate and efficient promoter recognition by the mitochondrial RNA polymerase.
Synonyms:	MTTF1; MtTF1; MTTFA; mtTFA; OTTHUMP00000019633; TCF6; TCF6L1; TCF6L2; TCF6L3



[View online »](#)

Product images:



Western blot analysis of mtTFA in MCF-7 lysates using mtTFA antibody.