

Product datasheet for **TA385385**

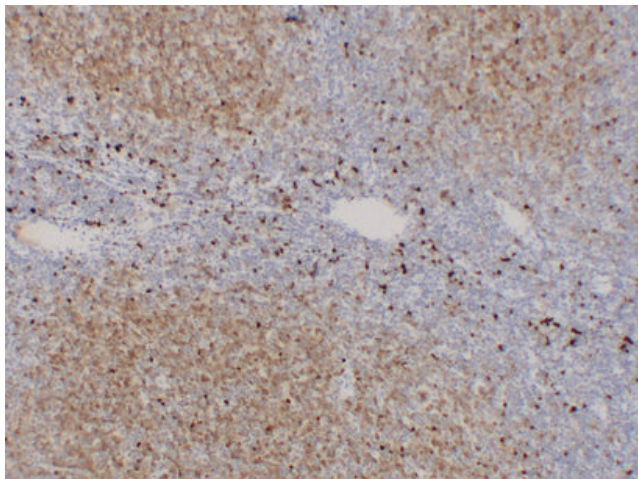
Tcl1 (TCL1A) Mouse Polyclonal Antibody

Product data:

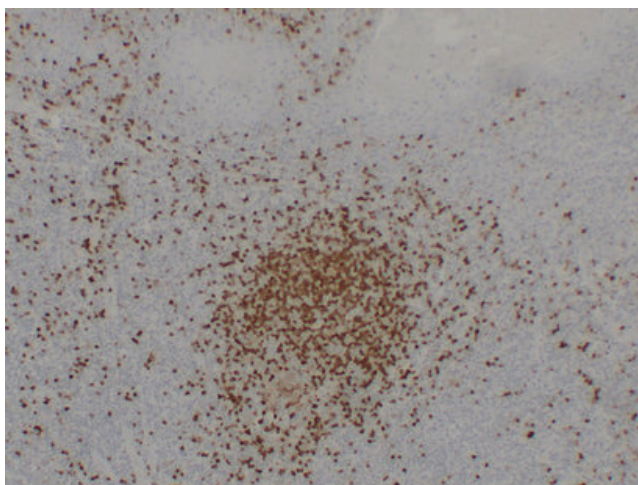
| | |
|-----------------------|--|
| Product Type: | Primary Antibodies |
| Applications: | IHC |
| Recommended Dilution: | IHC-p: 1/100-1/500 |
| Reactivity: | Human |
| Host: | Mouse |
| Isotype: | IgG1, kappa |
| Clonality: | Polyclonal |
| Immunogen: | Synthesized peptide derived from human TCL1 |
| Formulation: | Liquid in PBS containing 50% glycerol, 0.5% BSA and 0.02% sodium azide, pH 7.3. |
| Concentration: | lot specific |
| Purification: | Affinity Chromatography |
| Conjugation: | Unconjugated |
| Storage: | Store at 4°C short term. Aliquot and store at -20°C long term. Avoid freeze/thaw cycles. |
| Stability: | 1 year |
| Gene Name: | T-cell leukemia/lymphoma 1A |
| Database Link: | Entrez Gene 8115 Human P56279 |
| Background: | Swiss-Prot Acc.P56279. |
| Synonyms: | TCL-1; TCL1 |



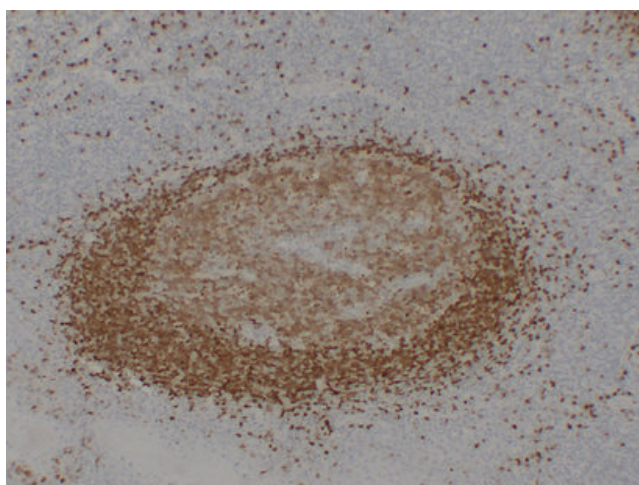
[View online »](#)

Product images:

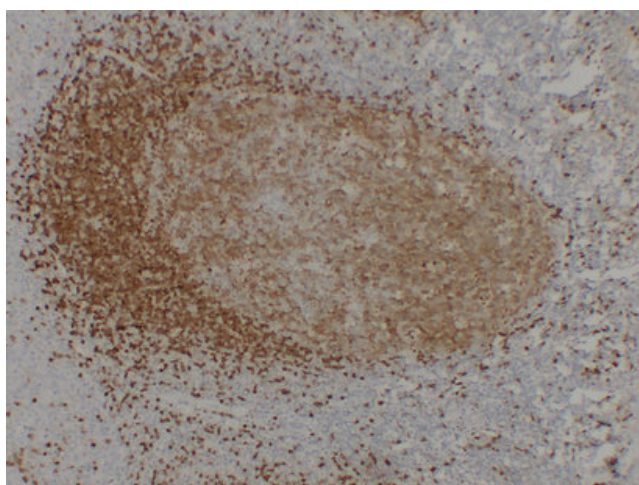
Immunohistochemical analysis of paraffin-embedded Follicular Lymphoma. 1, Antibody was diluted at 1:200(4°,overnight). 2, Citric acid ,pH6.0 was used for antigen retrieval. 3,Secondary antibody was diluted at 1:200(room temperature, 30min).



Immunohistochemical analysis of paraffin-embedded Tonsil. 1, Antibody was diluted at 1:200(4°,overnight). 2, Citric acid ,pH6.0 was used for antigen retrieval. 3,Secondary antibody was diluted at 1:200(room temperature, 30min).



Immunohistochemical analysis of paraffin-embedded Tonsil. 1, Antibody was diluted at 1:200(4°,overnight). 2, Citric acid ,pH6. was used for antigen retrieval. 3,Secondary antibody was diluted at 1:200(room temperature, 30min).



Immunohistochemical analysis of paraffin-embedded Tonsil. 1, Antibody was diluted at 1:200(4°,overnight). 2, Citric acid ,pH6.0 was used for antigen retrieval. 3,Secondary antibody was diluted at 1:200(room temperature, 30min).