

Product datasheet for **TA385384**

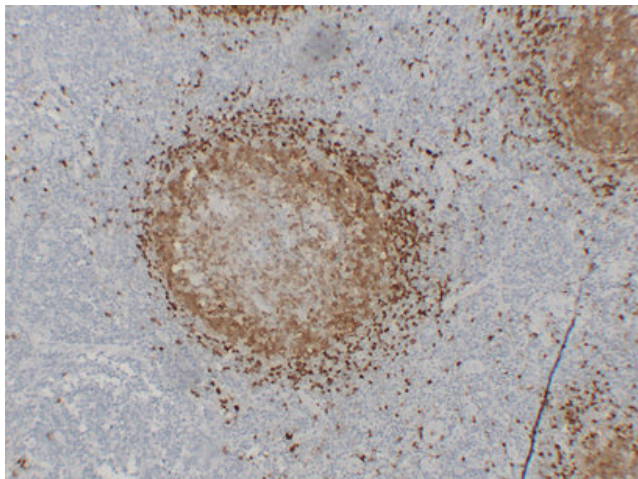
Tcl1 (TCL1A) Mouse Monoclonal Antibody [Clone ID: 4A1-8E8-2F9]

Product data:

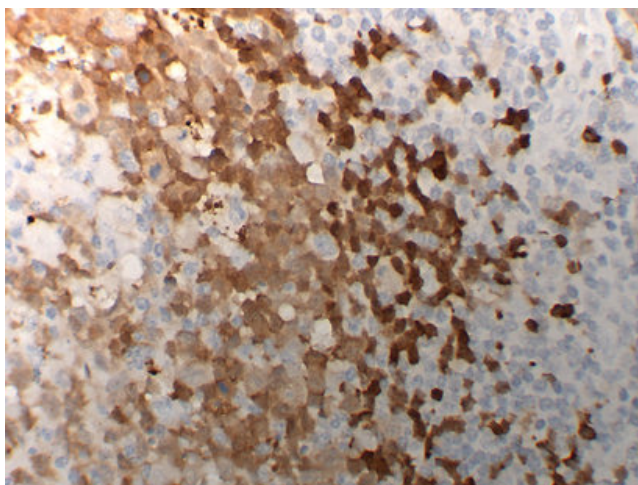
Product Type:	Primary Antibodies
Clone Name:	4A1-8E8-2F9
Applications:	IHC
Recommended Dilution:	IHC-p: 1/100-1/500
Reactivity:	Human
Host:	Mouse
Isotype:	IgG1, kappa
Clonality:	Monoclonal
Immunogen:	Synthesized peptide derived from human TCL1
Formulation:	Liquid in PBS containing 50% glycerol, 0.5% BSA and 0.02% sodium azide, pH 7.3.
Concentration:	lot specific
Purification:	Affinity Chromatography
Conjugation:	Unconjugated
Storage:	Store at 4°C short term. Aliquot and store at -20°C long term. Avoid freeze/thaw cycles.
Stability:	1 year
Gene Name:	T-cell leukemia/lymphoma 1A
Database Link:	Entrez Gene 8115 Human P56279
Background:	Swiss-Prot Acc.P56279.
Synonyms:	TCL-1; TCL1



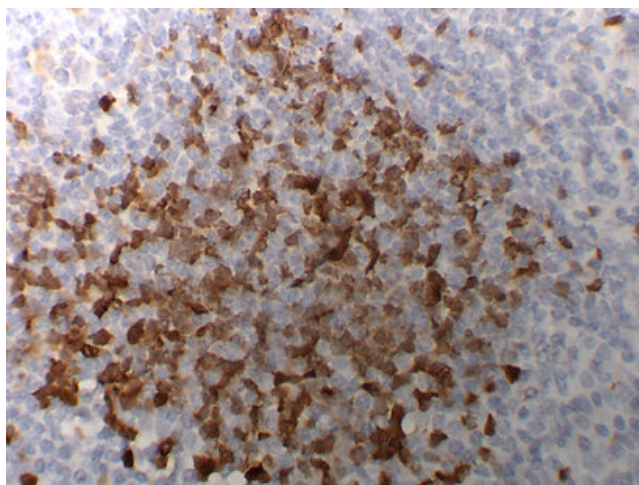
[View online »](#)

Product images:

Immunohistochemical analysis of paraffin-embedded Tonsil. 1, Antibody was diluted at 1:200(4°,overnight). 2, Citrate buffer of pH6.0 was used for antigen retrieval. 3,Secondary antibody was diluted at 1:200(room temperature, 30min).



Immunohistochemical analysis of paraffin-embedded Tonsil. 1, Antibody was diluted at 1:200(4°,overnight). 2, Citrate buffer of pH6.0 was used for antigen retrieval. 3,Secondary antibody was diluted at 1:200(room temperature, 30min).



Immunohistochemical analysis of paraffin-embedded Tonsil. 1, Antibody was diluted at 1:200(4°, overnight). 2, Citrate buffer of pH6. was used for antigen retrieval. 3, Secondary antibody was diluted at 1:200(room temperature, 30min).