

## Product datasheet for **TA385383M**

### TCF7L2 Rabbit Monoclonal Antibody [Clone ID: R09-1D1]

#### Product data:

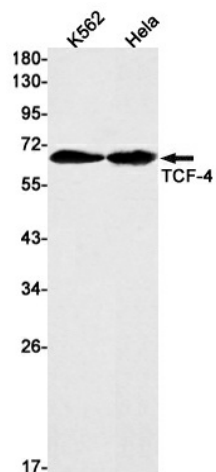
Product Type:	Primary Antibodies
Clone Name:	R09-1D1
Applications:	IHC, IP, WB
Recommended Dilution:	WB: 1/1000 IHC: 1/50 IP: 1/20
Reactivity:	Human
Host:	Rabbit
Isotype:	IgG
Clonality:	Monoclonal
Immunogen:	A synthetic peptide of human TCF-4
Formulation:	50mM Tris-Glycine(pH 7.4), 0.15M NaCl, 40% Glycerol, 0.01% Sodium azide and 0.05% BSA
Concentration:	lot specific
Purification:	Affinity Purified
Conjugation:	Unconjugated
Storage:	Store at 4°C short term. Aliquot and store at -20°C long term. Avoid freeze/thaw cycles.
Stability:	1 year
Predicted Protein Size:	Calculated MW: 68 kDa; Observed MW: 68 kDa
Gene Name:	transcription factor 7 like 2
Database Link:	<a href="#">Entrez Gene 6934 Human Q9NQB0</a>
Background:	Swiss-Prot Acc.Q9NQB0.Participates in the Wnt signaling pathway and modulates MYC expression by binding to its promoter in a sequence-specific manner. Acts as repressor in the absence of CTNNB1, and as activator in its presence. Activates transcription from promoters with several copies of the Tcf motif 5'-CCTTTGATC-3' in the presence of CTNNB1. TLE1, TLE2, TLE3 and TLE4 repress transactivation mediated by TCF7L2/TCF4 and CTNNB1. Expression of dominant-negative mutants results in cell-cycle arrest in G1. Necessary for the maintenance of the epithelial stem-cell compartment of the small intestine.



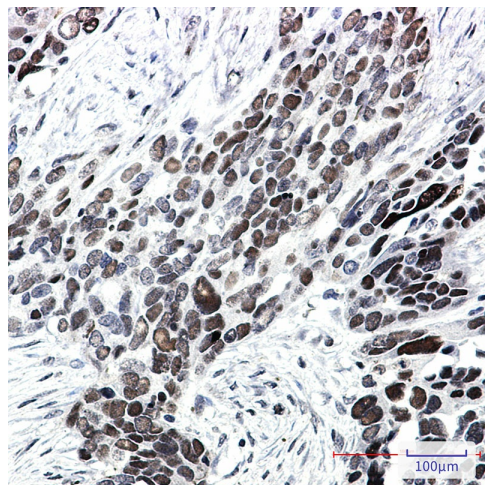
[View online »](#)

Synonyms: hTCF-4; TCF-4; TCF4

### Product images:



Western blot analysis of TCF4 in K562, HeLa lysates using Transcription Factor 7 Like 2 antibody.



Immunohistochemistry analysis of paraffin-embedded Human Cholangiocarcinoma using TCF4 antibody. High-pressure and temperature Sodium Citrate pH 6.0 was used for antigen retrieval.