

Product datasheet for **TA385380**

TATA binding protein (TBP) Mouse Monoclonal Antibody [Clone ID: 10C1-4F6-4B7]

Product data:

Product Type:	Primary Antibodies
Clone Name:	10C1-4F6-4B7
Applications:	IHC
Recommended Dilution:	IHC1/100-1/200
Reactivity:	Human, Rat, Mouse
Host:	Mouse
Isotype:	IgG1
Clonality:	Monoclonal
Immunogen:	Purified recombinant protein expressed in E.coli.
Formulation:	Liquid in PBS containing 50% glycerol, 0.5% BSA and 0.03% Proclin 300, pH 7.3.
Concentration:	lot specific
Purification:	Affinity Purified
Conjugation:	Unconjugated
Storage:	Store at 4°C short term. Aliquot and store at -20°C long term. Avoid freeze/thaw cycles.
Stability:	1 year
Predicted Protein Size:	35-45kDa
Gene Name:	TATA-box binding protein
Database Link:	Entrez Gene 6908 Human P20226



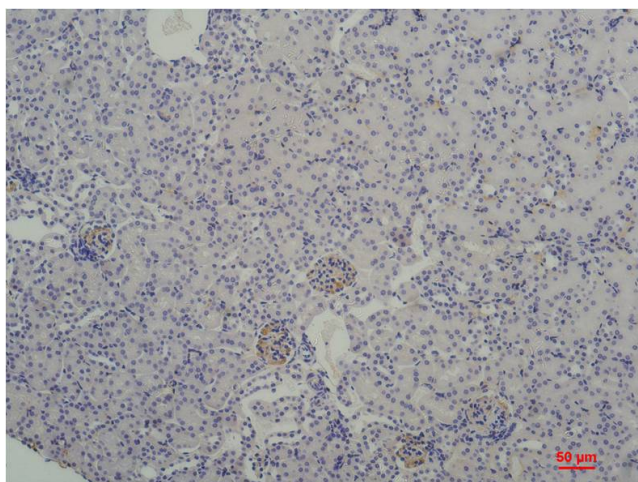
[View online »](#)

Background:

Swiss-Prot Acc.P20226.General transcription factor that functions at the core of the DNA-binding multiprotein factor TFIID (PubMed:2374612, PubMed:2363050, PubMed:2194289, PubMed:9836642, PubMed:27193682). Binding of TFIID to the TATA box is the initial transcriptional step of the pre-initiation complex (PIC), playing a role in the activation of eukaryotic genes transcribed by RNA polymerase II (PubMed:2374612, PubMed:2363050, PubMed:2194289, PubMed:9836642, PubMed:27193682). Component of a BRF2-containing transcription factor complex that regulates transcription mediated by RNA polymerase III (PubMed:26638071). Component of the transcription factor SL1/TIF-IB complex, which is involved in the assembly of the PIC (pre-initiation complex) during RNA polymerase I-dependent transcription (PubMed:15970593). The rate of PIC formation probably is primarily dependent on the rate of association of SL1 with the rDNA promoter. SL1 is involved in stabilization of nucleolar transcription factor 1/UBTF on rDNA.

Synonyms:

GTF2D; GTF2D1; HDL4; SCA17; TFIID

Product images:

Immunohistochemistry analysis of paraffin-embedded Human Breast Carcinoma using TATA Box Binding Protein (10C1) antibody. High-pressure and temperature Sodium Citrate pH 6.0 was used for antigen retrieval.