

## Product datasheet for **TA385377S**

### **TAX1BP1 Rabbit Monoclonal Antibody [Clone ID: R07-6F6]**

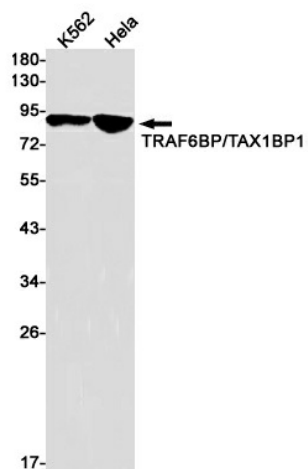
#### **Product data:**

|                                |   |
|--------------------------------|---|
| <b>Product Type:</b>           | Primary Antibodies  |
| <b>Clone Name:</b>             | R07-6F6   |
| <b>Applications:</b>           | IHC, WB   |
| <b>Recommended Dilution:</b>   | WB: 1/1000<br>IHC: 1/20   |
| <b>Reactivity:</b>             | Human   |
| <b>Host:</b>                   | Rabbit  |
| <b>Isotype:</b>                | IgG   |
| <b>Clonality:</b>              | Monoclonal  |
| <b>Immunogen:</b>              | A synthetic peptide of human TRAF6BP  |
| <b>Formulation:</b>            | 50mM Tris-Glycine(pH 7.4), 0.15M NaCl, 40% Glycerol, 0.01% Sodium azide and 0.05% BSA   |
| <b>Concentration:</b>          | lot specific  |
| <b>Purification:</b>           | Affinity Purified   |
| <b>Conjugation:</b>            | Unconjugated  |
| <b>Storage:</b>                | Store at 4°C short term. Aliquot and store at -20°C long term. Avoid freeze/thaw cycles.  |
| <b>Stability:</b>              | 1 year  |
| <b>Predicted Protein Size:</b> | Calculated MW: 91 kDa; Observed MW: 91 kDa  |
| <b>Gene Name:</b>              | Tax1 binding protein 1  |
| <b>Database Link:</b>          | <a href="#">Entrez Gene 8887 Human Q86VP1</a>   |
| <b>Background:</b>             | Swiss-Prot Acc.Q86VP1.Inhibits TNF-induced apoptosis by mediating the TNFAIP3 anti-apoptotic activity. Degraded by caspase-3-like family proteins upon TNF-induced apoptosis. May also play a role in the pro-inflammatory cytokine IL-1 signaling cascade. |
| <b>Synonyms:</b>               | 1200003J11Rik; 1700069J21Rik; Aa1076; AA930106; D6Ertd404e; D6Ertd772e; T6bp; TXBP151   |

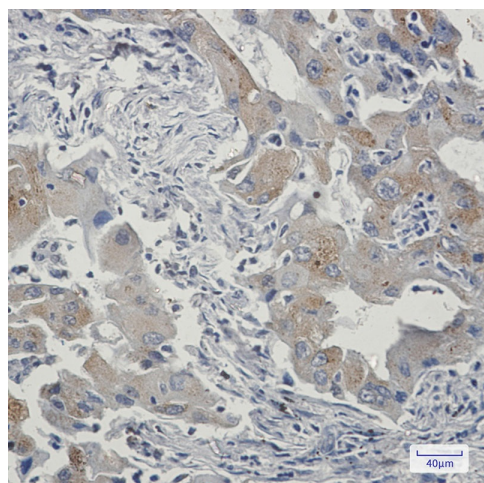


[View online »](#)

## Product images:



Western blot analysis of TRAF6BP/TAX1BP1 in K562, HeLa lysates using TAX1BP1 antibody.



Immunohistochemistry analysis of paraffin-embedded Human lung cancer using TRAF6BP antibody. High-pressure and temperature Sodium Citrate pH 6.0 was used for antigen retrieval.