

## Product datasheet for **TA385377M**

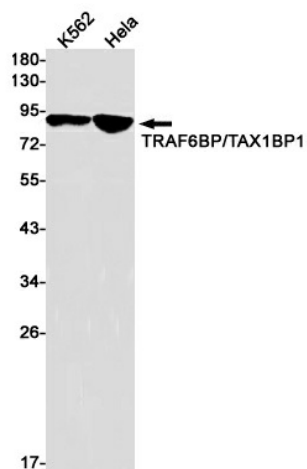
### **TAX1BP1 Rabbit Monoclonal Antibody [Clone ID: R07-6F6]**

#### **Product data:**

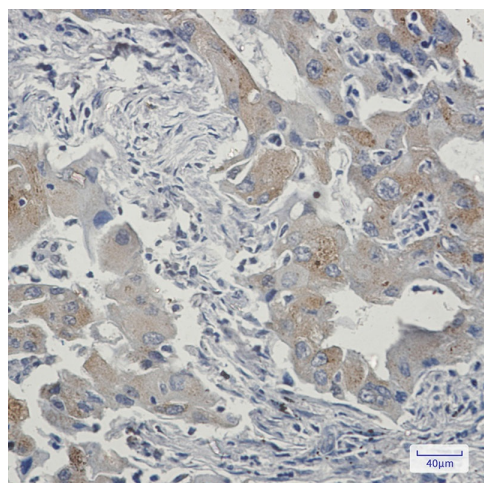
Product Type:	Primary Antibodies
Clone Name:	R07-6F6
Applications:	IHC, WB
Recommended Dilution:	WB: 1/1000 IHC: 1/20
Reactivity:	Human
Host:	Rabbit
Isotype:	IgG
Clonality:	Monoclonal
Immunogen:	A synthetic peptide of human TRAF6BP
Formulation:	50mM Tris-Glycine(pH 7.4), 0.15M NaCl, 40% Glycerol, 0.01% Sodium azide and 0.05% BSA
Concentration:	lot specific
Purification:	Affinity Purified
Conjugation:	Unconjugated
Storage:	Store at 4°C short term. Aliquot and store at -20°C long term. Avoid freeze/thaw cycles.
Stability:	1 year
Predicted Protein Size:	Calculated MW: 91 kDa; Observed MW: 91 kDa
Gene Name:	Tax1 binding protein 1
Database Link:	<a href="#">Entrez Gene 8887 Human Q86VP1</a>
Background:	Swiss-Prot Acc.Q86VP1.Inhibits TNF-induced apoptosis by mediating the TNFAIP3 anti-apoptotic activity. Degraded by caspase-3-like family proteins upon TNF-induced apoptosis. May also play a role in the pro-inflammatory cytokine IL-1 signaling cascade.
Synonyms:	1200003J11Rik; 1700069J21Rik; Aa1076; AA930106; D6Ertd404e; D6Ertd772e; T6bp; TXBP151


[View online »](#)

## Product images:



Western blot analysis of TRAF6BP/TAX1BP1 in K562, HeLa lysates using TAX1BP1 antibody.



Immunohistochemistry analysis of paraffin-embedded Human lung cancer using TRAF6BP antibody. High-pressure and temperature Sodium Citrate pH 6.0 was used for antigen retrieval.