

## Product datasheet for **TA385377**

### **TAX1BP1 Rabbit Monoclonal Antibody [Clone ID: R07-6F6]**

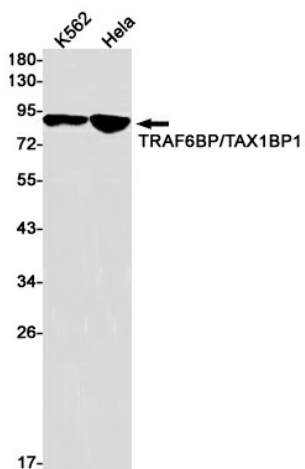
#### **Product data:**

<b>Product Type:</b>	Primary Antibodies
<b>Clone Name:</b>	R07-6F6
<b>Applications:</b>	IHC, WB
<b>Recommended Dilution:</b>	WB: 1/1000 IHC: 1/20
<b>Reactivity:</b>	Human
<b>Host:</b>	Rabbit
<b>Isotype:</b>	IgG
<b>Clonality:</b>	Monoclonal
<b>Immunogen:</b>	A synthetic peptide of human TRAF6BP
<b>Formulation:</b>	50mM Tris-Glycine(pH 7.4), 0.15M NaCl, 40% Glycerol, 0.01% Sodium azide and 0.05% BSA
<b>Concentration:</b>	lot specific
<b>Purification:</b>	Affinity Purified
<b>Conjugation:</b>	Unconjugated
<b>Storage:</b>	Store at 4°C short term. Aliquot and store at -20°C long term. Avoid freeze/thaw cycles.
<b>Stability:</b>	1 year
<b>Predicted Protein Size:</b>	Calculated MW: 91 kDa; Observed MW: 91 kDa
<b>Gene Name:</b>	Tax1 binding protein 1
<b>Database Link:</b>	<a href="#">Entrez Gene 8887 Human Q86VP1</a>
<b>Background:</b>	Swiss-Prot Acc.Q86VP1.Inhibits TNF-induced apoptosis by mediating the TNFAIP3 anti-apoptotic activity. Degraded by caspase-3-like family proteins upon TNF-induced apoptosis. May also play a role in the pro-inflammatory cytokine IL-1 signaling cascade.
<b>Synonyms:</b>	1200003J11Rik; 1700069J21Rik; Aa1076; AA930106; D6Ertd404e; D6Ertd772e; T6bp; TXBP151

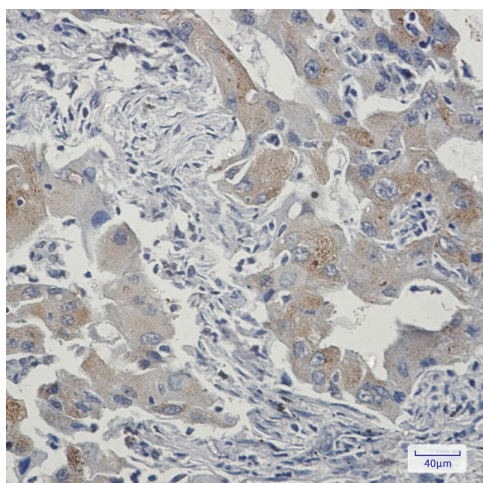


[View online »](#)

## Product images:



Western blot analysis of TRAF6BP/TAX1BP1 in K562, HeLa lysates using TAX1BP1 antibody.



Immunohistochemistry analysis of paraffin-embedded Human lung cancer using TRAF6BP antibody. High-pressure and temperature Sodium Citrate pH 6.0 was used for antigen retrieval.