

Product datasheet for **TA385376S**

TDP43 (TARDBP) Rabbit Polyclonal Antibody

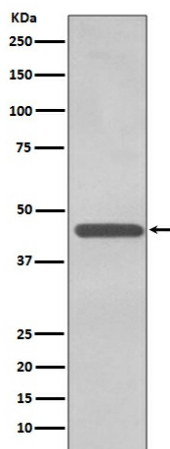
Product data:

Product Type:	Primary Antibodies
Applications:	FC, IF, IHC, IP, WB
Recommended Dilution:	WB: 1/500-1/2000 IHC: 1/50-1/200 ICC/IF: 1/50-1/200 IP: 1/50 FC: 1/200
Reactivity:	Human, Mouse, Rat, Zebrafish
Host:	Rabbit
Isotype:	IgG
Clonality:	Polyclonal
Immunogen:	A synthesized peptide derived from human TDP43
Formulation:	Rabbit IgG in phosphate buffered saline , pH 7.4, 150mM NaCl, 0.02% sodium azide and 50% glycerol.
Concentration:	lot specific
Purification:	Affinity Chromatography
Conjugation:	Unconjugated
Storage:	Store at 4°C short term. Aliquot and store at -20°C long term. Avoid freeze/thaw cycles.
Stability:	1 year
Predicted Protein Size:	45kDa
Gene Name:	TAR DNA binding protein
Database Link:	Entrez Gene 23435 Human Q13148
Background:	Swiss-Prot Acc.Q13148.TDP43 (TAR DNA-binding protein 43) is involved in transcriptional regulation and exon splicing. While normal TDP43 is a nuclear protein, pathological TDP43 is a component of insoluble aggregates in patients with frontotemporal lobar degeneration (FTLD) and amyotrophic lateral sclerosis (ALS).
Synonyms:	ALS10; TDP-43



[View online »](#)

Product images:



Western blot analysis of TDP43 in K562 lysates using TDP 43 antibody.