

Product datasheet for **TA385375M**

TAF1C Rabbit Monoclonal Antibody [Clone ID: R08-2B9]

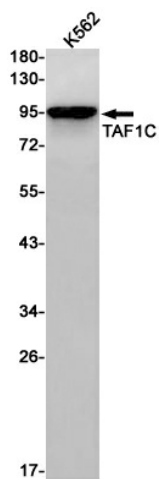
Product data:

Product Type:	Primary Antibodies
Clone Name:	R08-2B9
Applications:	IP, WB
Recommended Dilution:	WB: 1/1000 IP: 1/20
Reactivity:	Human
Host:	Rabbit
Isotype:	IgG
Clonality:	Monoclonal
Immunogen:	A synthetic peptide of human TAF1C
Formulation:	50mM Tris-Glycine(pH 7.4), 0.15M NaCl, 40% Glycerol, 0.01% Sodium azide and 0.05% BSA
Concentration:	lot specific
Purification:	Affinity Purified
Conjugation:	Unconjugated
Storage:	Store at 4°C short term. Aliquot and store at -20°C long term. Avoid freeze/thaw cycles.
Stability:	1 year
Predicted Protein Size:	Calculated MW: 95 kDa; Observed MW: 95 kDa
Gene Name:	TATA-box binding protein associated factor, RNA polymerase I subunit C
Database Link:	Entrez Gene 9013 Human Q15572
Background:	Swiss-Prot Acc.Q15572.Component of the transcription factor SL1/TIF-IB complex, which is involved in the assembly of the PIC (preinitiation complex) during RNA polymerase I-dependent transcription. The rate of PIC formation probably is primarily dependent on the rate of association of SL1/TIF-IB with the rDNA promoter. SL1/TIF-IB is involved in stabilization of nucleolar transcription factor 1/UBTF on rDNA. Formation of SL1/TIF-IB excludes the association of TBP with TFIID subunits. Recruits RNA polymerase I to the rRNA gene promoter via interaction with RRN3.


[View online »](#)

Synonyms: MGC:39976; SL1; TAFI95; TAFI110

Product images:



Western blot analysis of TAF1C in K562 lysates using TAF1C antibody.