

Product datasheet for **TA385374S**

TAF15 Rabbit Monoclonal Antibody [Clone ID: R04-8A3]

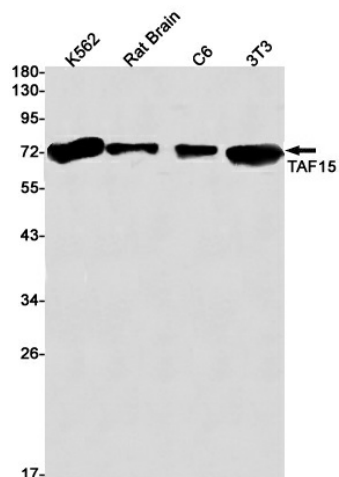
Product data:

Product Type:	Primary Antibodies
Clone Name:	R04-8A3
Applications:	IF, IHC, WB
Recommended Dilution:	WB: 1/2000-1/10000 IHC: 1/50 ICC/IF: 1/50-1/100
Reactivity:	Human, Mouse, Rat
Host:	Rabbit
Isotype:	IgG
Clonality:	Monoclonal
Immunogen:	A synthetic peptide of human TAF15
Formulation:	50mM Tris-Glycine(pH 7.4), 0.15M NaCl, 40% Glycerol, 0.01% Sodium azide and 0.05% BSA
Concentration:	lot specific
Purification:	Affinity Purified
Conjugation:	Unconjugated
Storage:	Store at 4°C short term. Aliquot and store at -20°C long term. Avoid freeze/thaw cycles.
Stability:	1 year
Predicted Protein Size:	Calculated MW: 62 kDa; Observed MW: 77 kDa
Gene Name:	TATA-box binding protein associated factor 15
Database Link:	Entrez Gene 8148 Human Q92804
Background:	Swiss-Prot Acc.Q92804.RNA and ssDNA-binding protein that may play specific roles during transcription initiation at distinct promoters. Can enter the preinitiation complex together with the RNA polymerase II (Pol II).
Synonyms:	hTAFII68; Npl3; RBP56; TAF(II)68; TAF2N; TAFII68

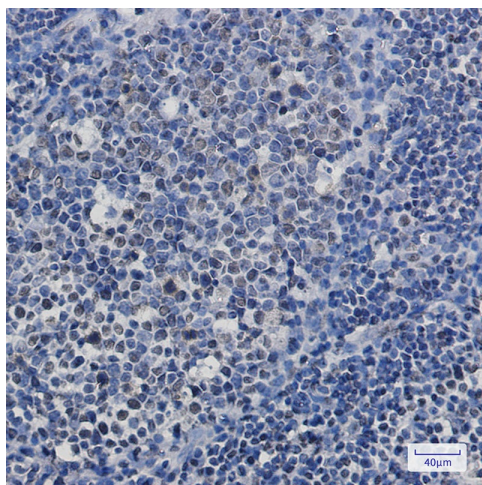


[View online »](#)

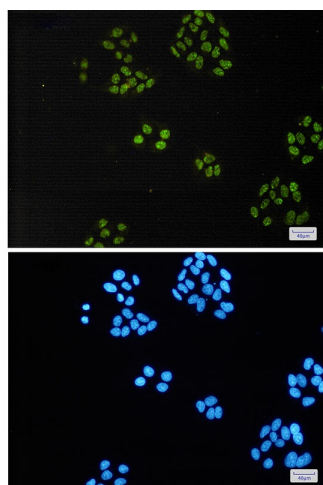
Product images:



Western blot analysis of TAF15 in K562, rat Brain, C6, 3T3 lysates using TAF15 antibody.



Immunohistochemistry analysis of paraffin-embedded Human tonsil using TAF15 antibody. High-pressure and temperature Sodium Citrate pH 6.0 was used for antigen retrieval.



Immunocytochemistry analysis of TAF15(green) in HeLa using TAF15 antibody, and DAPI(blue)