

Product datasheet for **TA385373**

TACD2 (TACSTD2) Rabbit Polyclonal Antibody

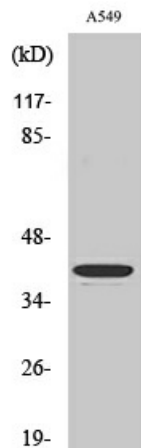
Product data:

Product Type:	Primary Antibodies
Applications:	ELISA, IHC, WB
Recommended Dilution:	WB: 1/500-1/2000 IHC: 1/100-1/300 ELISA: 1/20000
Reactivity:	Human, Mouse, Rat
Host:	Rabbit
Isotype:	IgG
Clonality:	Polyclonal
Immunogen:	The antiserum was produced against synthesized peptide derived from human TACD2. AA range:131-180
Formulation:	Liquid in PBS containing 50% glycerol, 0.5% BSA and 0.02% sodium azide, pH 7.3.
Concentration:	lot specific
Purification:	Affinity Chromatography
Conjugation:	Unconjugated
Storage:	Store at 4°C short term. Aliquot and store at -20°C long term. Avoid freeze/thaw cycles.
Stability:	1 year
Predicted Protein Size:	Observed MW (kDa):35
Gene Name:	tumor-associated calcium signal transducer 2
Database Link:	Entrez Gene 4070 Human P09758
Background:	Swiss-Prot Acc.P09758.May function as a growth factor receptor.
Synonyms:	EGP-1; EGP1; GA733-1; GA7331; GP50; M1S1; TROP2

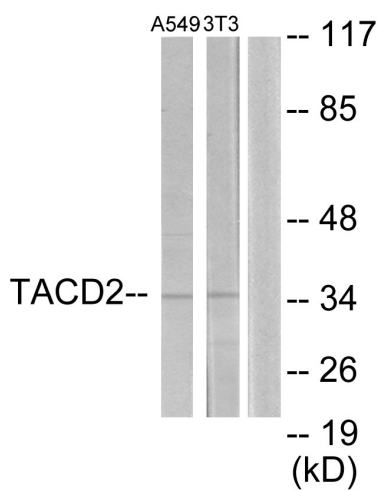


[View online »](#)

Product images:



Western blot analysis of TACSTD2 in various lysates using TACSTD2 antibody.



Western blot analysis of TACSTD2 in A549 and NIH/3T3 lysates using TACD2 antibody. The lane on the right is blocked with the synthesized peptide.