

Product datasheet for **TA385370S**

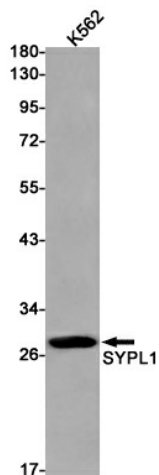
SYPL1 Rabbit Monoclonal Antibody [Clone ID: R02-9K7]

Product data:

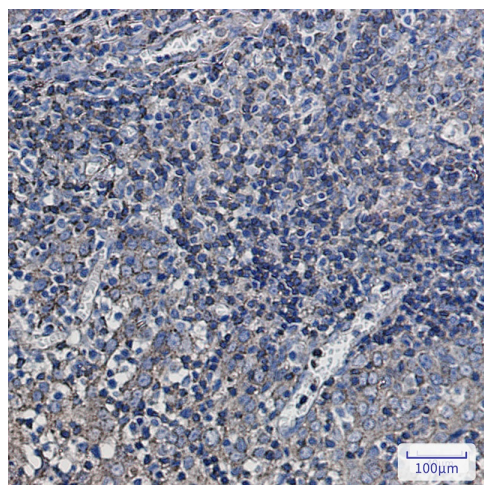
Product Type:	Primary Antibodies
Clone Name:	R02-9K7
Applications:	IHC, WB
Recommended Dilution:	WB: 1/1000 IHC: 1/20-1/100
Reactivity:	Human
Host:	Rabbit
Isotype:	IgG
Clonality:	Monoclonal
Immunogen:	Recombinant protein of human SYPL1
Formulation:	50mM Tris-Glycine(pH 7.4), 0.15M NaCl, 40% Glycerol, 0.01% Sodium azide and 0.05% BSA
Concentration:	lot specific
Purification:	Affinity Purified
Conjugation:	Unconjugated
Storage:	Store at 4°C short term. Aliquot and store at -20°C long term. Avoid freeze/thaw cycles.
Stability:	1 year
Predicted Protein Size:	Calculated MW: 29 kDa; Observed MW: 29 kDa
Gene Name:	synaptophysin like 1
Database Link:	Entrez Gene 6856 Human Q16563
Background:	Swiss-Prot Acc.Q16563.Synaptophysin-like protein 1
Synonyms:	H-SP1; pantophysin; SYPL

[View online »](#)

Product images:



Western blot analysis of SYPL1 in K562 lysates using Synaptophysin Like Protein 1 antibody.



Immunohistochemistry analysis of paraffin-embedded Human tonsil using SYPL1 antibody. High-pressure and temperature Sodium Citrate pH 6.0 was used for antigen retrieval.