

Product datasheet for **TA385368**

SynGAP (SYNGAP1) Rabbit Polyclonal Antibody

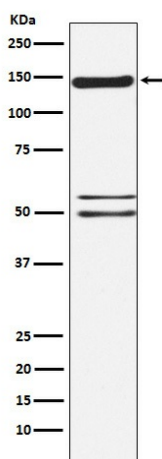
Product data:

| | |
|-------------------------|---|
| Product Type: | Primary Antibodies |
| Applications: | FC, IF, WB |
| Recommended Dilution: | WB: 1/500-1/2000 ICC/IF: 1/50-1/200 FC: 1/50 |
| Reactivity: | Human, Mouse, Rat |
| Host: | Rabbit |
| Isotype: | IgG |
| Clonality: | Polyclonal |
| Immunogen: | A synthesized peptide derived from human SynGAP |
| Formulation: | Rabbit IgG in phosphate buffered saline , pH 7.4, 150mM NaCl, 0.02% sodium azide and 50% glycerol. |
| Concentration: | lot specific |
| Purification: | Affinity Chromatography |
| Conjugation: | Unconjugated |
| Storage: | Store at 4°C short term. Aliquot and store at -20°C long term. Avoid freeze/thaw cycles. |
| Stability: | 1 year |
| Predicted Protein Size: | 147kDa |
| Gene Name: | synaptic Ras GTPase activating protein 1 |
| Database Link: | Entrez Gene 8831 Human Q96PV0 |
| Background: | Swiss-Prot Acc.Q96PV0.Major constituent of the PSD essential for postsynaptic signaling. Inhibitory regulator of the Ras-cAMP pathway. Member of the NMDAR signaling complex in excitatory synapses, it may play a role in NMDAR-dependent control of AMPAR potentiation, AMPAR membrane trafficking and synaptic plasticity. |
| Synonyms: | DKFZp761G1421; KIAA1938; MRD5; RASA1; RASA5; SYNGAP |



[View online »](#)

Product images:



Western blot analysis of SynGAP in Human fetal brain lysates using SynGAP antibody.