

Product datasheet for **TA385367**

Synapsin I (SYN1) Rabbit Polyclonal Antibody

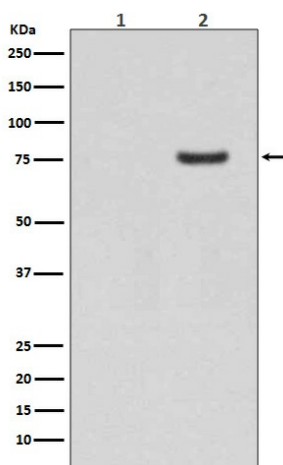
Product data:

Product Type:	Primary Antibodies
Applications:	IHC, WB
Recommended Dilution:	WB: 1/500-1/2000 IHC: 1/50-1/200
Reactivity:	Human, Mouse, Rat
Host:	Rabbit
Isotype:	IgG
Clonality:	Polyclonal
Immunogen:	A synthesized peptide derived from human Phospho-Synapsin I (S9) (Phosphorylated)
Formulation:	Rabbit IgG in phosphate buffered saline , pH 7.4, 150mM NaCl, 0.02% sodium azide and 50% glycerol.
Concentration:	lot specific
Purification:	Affinity Chromatography
Conjugation:	Unconjugated
Storage:	Store at 4°C short term. Aliquot and store at -20°C long term. Avoid freeze/thaw cycles.
Stability:	1 year
Predicted Protein Size:	77kDa
Gene Name:	synapsin I
Database Link:	Entrez Gene 6853 Human P17600
Background:	Swiss-Prot Acc.P17600.This gene is a member of the synapsin gene family. Synapsins encode neuronal phosphoproteins which associate with the cytoplasmic surface of synaptic vesicles. Family members are characterized by common protein domains, and they are implicated in synaptogenesis and the modulation of neurotransmitter release, suggesting a potential role in several neuropsychiatric diseases.
Synonyms:	SYN1a; SYN1b; SYN1



[View online »](#)

Product images:



Western blot analysis of Phospho-Synapsin I (S9) in (1) Human brain lysates; (2) Human brain lysates treated with AP using Phospho-Synapsin I (Ser9) antibody.