

Product datasheet for **TA385366S**

Synapsin I (SYN1) Rabbit Polyclonal Antibody

Product data:

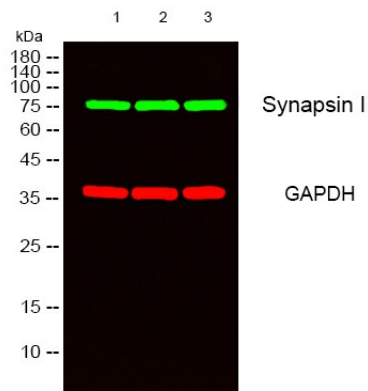
Product Type:	Primary Antibodies
Applications:	ELISA, IF, IHC, WB
Recommended Dilution:	WB: 1/500-1/2000 IHC: 1/100-1/300 IF: 1/200-1/1000 ELISA: 1/20000
Reactivity:	Human, Mouse, Rat
Host:	Rabbit
Isotype:	IgG
Clonality:	Polyclonal
Immunogen:	The antiserum was produced against synthesized peptide derived from human Synapsin. AA range:3-52
Formulation:	Liquid in PBS containing 50% glycerol, 0.5% BSA and 0.02% sodium azide, pH 7.3.
Concentration:	lot specific
Purification:	Affinity Purified
Conjugation:	Unconjugated
Storage:	Store at 4°C short term. Aliquot and store at -20°C long term. Avoid freeze/thaw cycles.
Stability:	1 year
Predicted Protein Size:	Observed MW (kDa):74
Gene Name:	synapsin I
Database Link:	Entrez Gene 6853 Human P17600
Background:	Swiss-Prot Acc.P17600.
Synonyms:	SYN1a; SYN1b; SYNI



[View online »](#)

Product images:

□



Immunofluorescence analysis of HeLa cell.
Synapsin I Polyclonal Antibody(green) was diluted at 1:200(4° overnight)

Western blot analysis of lysates HeLa,293, 3T3 cells, primary antibody was diluted at 1:1000, 4°over night, secondary antibodywas diluted at 1:10000, 37° 1hour.