

## Product datasheet for **TA385365**

### SLC22A1 Rabbit Polyclonal Antibody

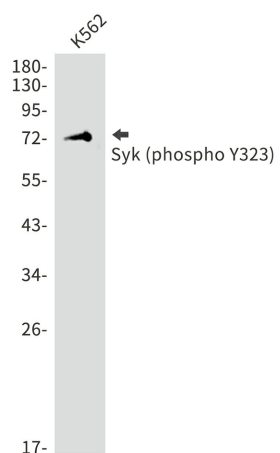
#### Product data:

Product Type:	Primary Antibodies
Applications:	FC, IF, IHC, WB
Recommended Dilution:	WB: 1/1000 IHC: 1/50 ICC/IF: 1/50 FC: 1/20
Reactivity:	Human
Host:	Rabbit
Isotype:	IgG
Clonality:	Polyclonal
Immunogen:	A synthetic phosphopeptide corresponding to residues surrounding Tyr323 of human Syk (Phosphorylated)
Formulation:	50mM Tris-Glycine(pH 7.4), 0.15M NaCl, 40% Glycerol, 0.01% Sodium azide and 0.05% BSA
Concentration:	lot specific
Purification:	Affinity Purified
Conjugation:	Unconjugated
Storage:	Store at 4°C short term. Aliquot and store at -20°C long term. Avoid freeze/thaw cycles.
Stability:	1 year
Predicted Protein Size:	Calculated MW: 72 kDa; Observed MW: 72 kDa
Gene Name:	solute carrier family 22 member 1
Database Link:	<a href="#">Entrez Gene 6580 Human P43405</a>
Background:	Swiss-Prot Acc.P43405.
Synonyms:	HOCT1; OCT1; oct1_cds



[View online »](#)

## Product images:



Western blot analysis of Phospho-Syk (Tyr323) in K562 lysates using Phospho-Syk (Tyr323) antibody.